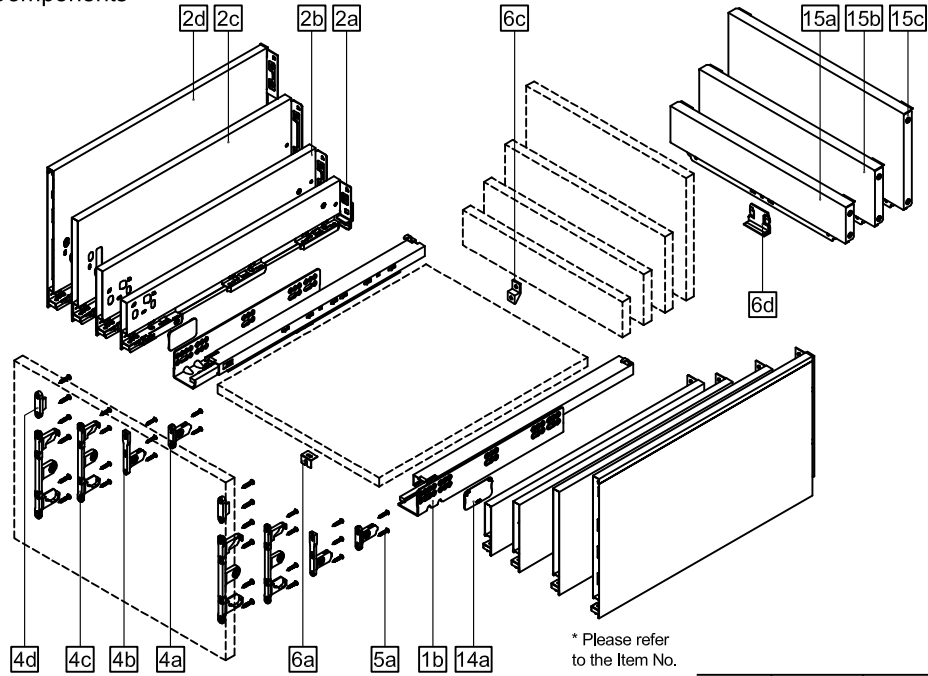




StrongMax výsuv PUSH 300 - 550 mm

Components



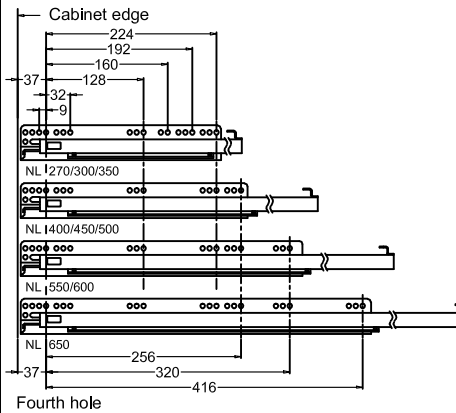
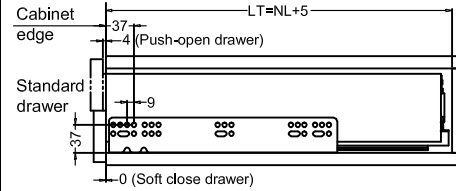
* Please refer to the Item No.

| | |
|-------------------------------|---|
| 1b. Cabinet profiles L/R | 5a. Front fixing-brackets screw (Ø4x17) |
| 2a. 89 Drawer Sides L/R | 6a. Front fixing (for wide drawer) |
| 2b. 121 Drawer Sides L/R | 6c. Back fixing (for wide drawer) |
| 2c. 185 Drawer Sides L/R | 6d. Metal back fixing (for wide drawer) |
| 2d. 249 Drawer Sides L/R | 14a. Side cover plate |
| 4a. 89 Front fixing-brackets | 15a. Metal back height 89 |
| 4b. 121 Front fixing-brackets | 15b. Metal back height 121 |
| 4c. 185 Front fixing-brackets | 15c. Metal back height 185 |
| 4d. 249 Front fixing-brackets | |

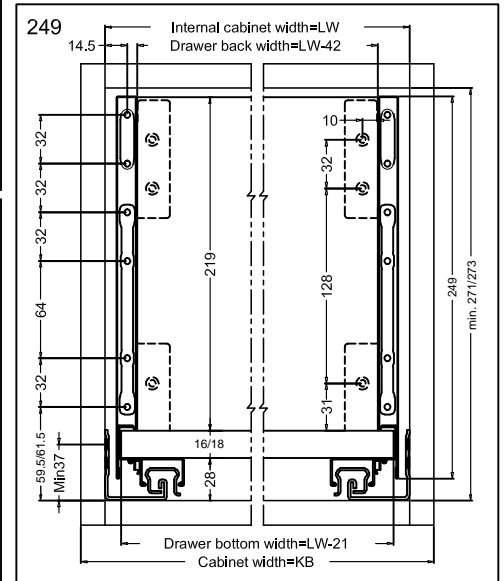
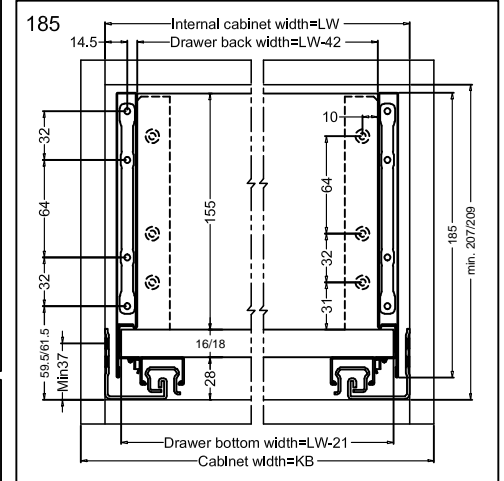
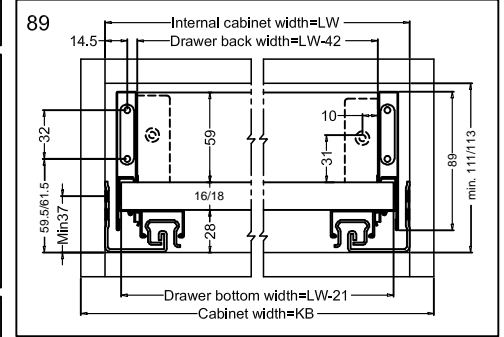
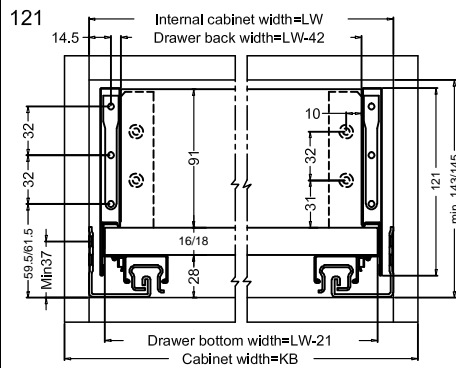
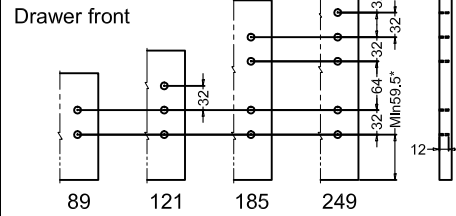
| Nominal length | Internal drawer length | Min. Installation length of drawer |
|----------------|------------------------|------------------------------------|
| 300mm | 274mm | 305mm |
| 350mm | 324mm | 355mm |
| 400mm | 374mm | 405mm |
| 450mm | 424mm | 455mm |
| 500mm | 474mm | 505mm |
| 550mm | 524mm | 555mm |

Installation dimensions (mm)

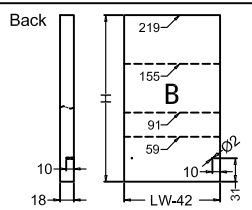
Nominal slide length = NL Internal cabinet depth = LT



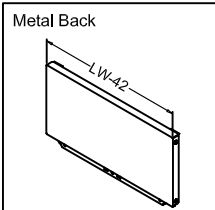
| Selection | Drill Size |
|-------------|------------|
| Wood screw | Ø2 x 12 |
| Anchor bolt | Ø10 x 12 |



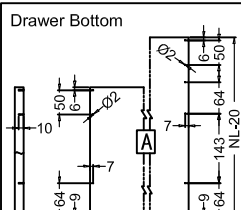
Drawer Back and Bottom Dimensions (mm)



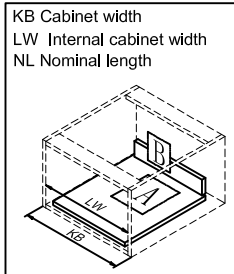
| Type | 89 | 121 | 185 | 249 |
|------|----|-----|-----|-----|
| H | 59 | 91 | 155 | 219 |



KB ≥ 800
Metal back fixed

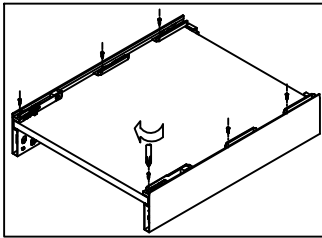


270~400 450~650

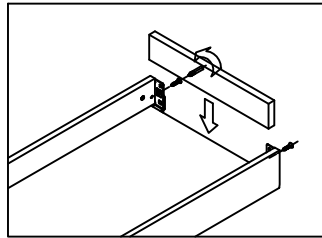


Assembly removal and adjustment

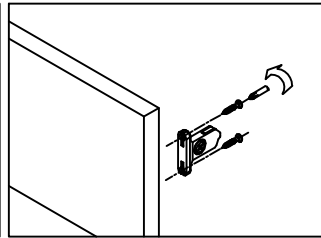
Assembly



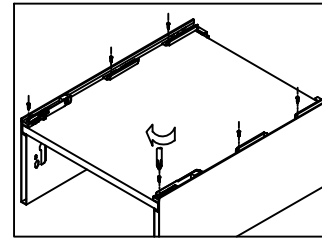
Bottom assembly



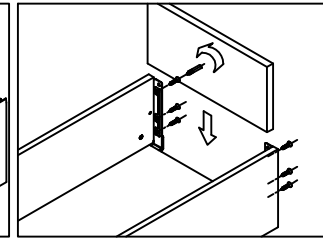
Back assembly



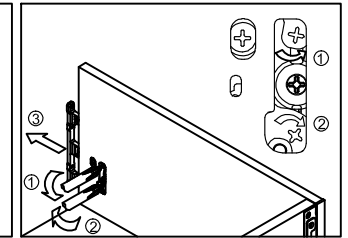
Front bracket assembly



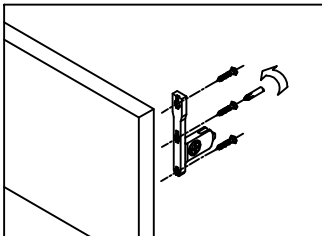
Bottom assembly



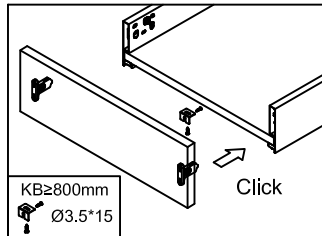
Back assembly



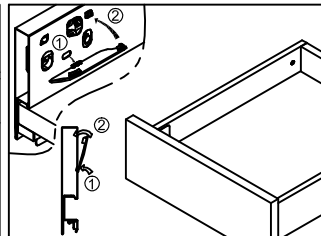
249 Front fixing-bracket release



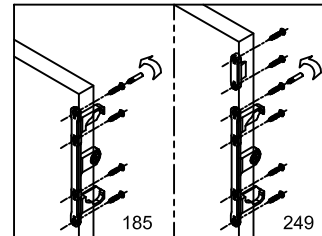
Front bracket assembly



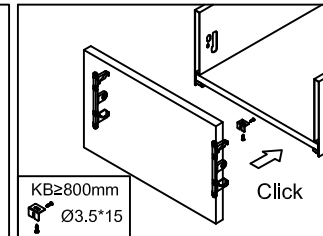
Front panel assembly



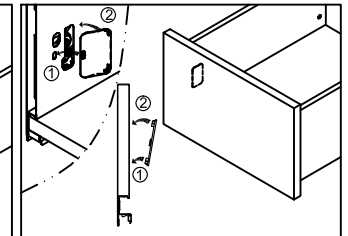
Side panel Cover assembly



Front bracket assembly

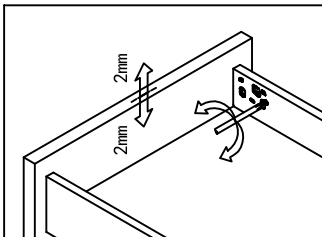


Front panel assembly

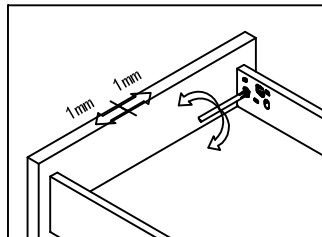


Side panel Cover assembly

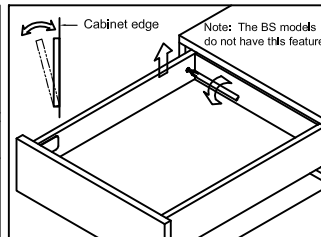
Adjustment



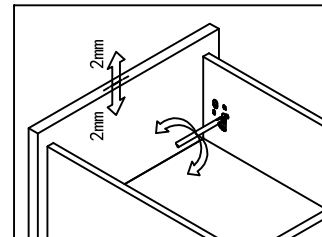
Up&down adjustment



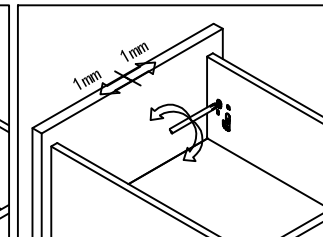
Left&right adjustment



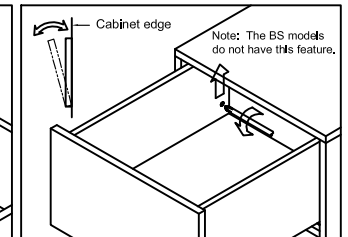
Tilting adjustment



Up&down adjustment

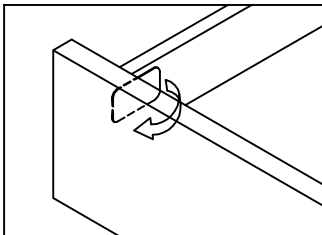


Left&right adjustment

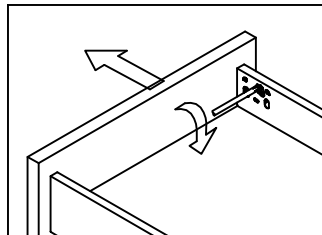


Tilting adjustment

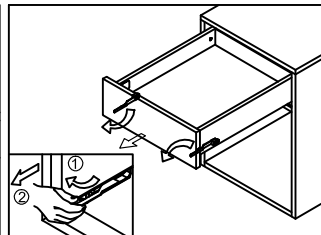
Removal



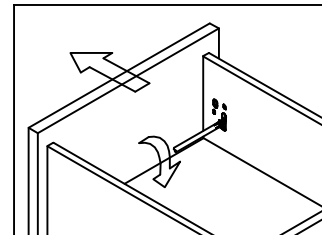
Remove the cover and pull out



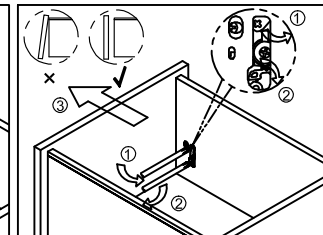
Front panel removal (89&121)



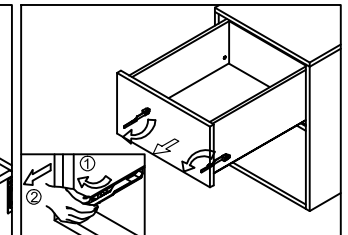
Drawer removal



Front panel removal (185)



Front panel removal (249)



Drawer removal