



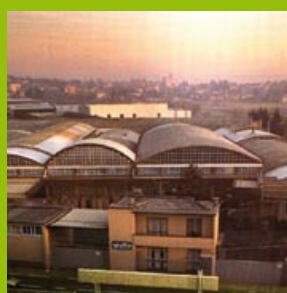
***TheSpace
Wonder***



FORMENTI &
GIOVENZANA

Value for many

FGV is the leading Italian manufacturer of furniture hardware and components. Since 1947 the company develops, produces and sells worldwide clever solutions for the furniture and kitchen industry at the right price. Over the years MADE IN FGV has become synonymous of Italian design combined with mass volume economies of scale. True to its slogan “Value for many”, FGV offers to the market the right products in the right quality at the right price. With 4 production plants in Italy, Slovakia, Brazil and China working with the same quality standards, FGV has the tools to propose affordable solutions with the latest technologies and supply so “Value for many”. Using state-of-the-art and cost efficient technology, FGV delivers a product portfolio which covers the needs of the industry. The FGV sales network of own subsidiaries is completed by a very performing net of strategic distributors to deliver modern furniture technology in every part of the world. Investing constantly in Customer service and new logistics solutions, FGV aim to help the furniture and kitchen industry to deliver an improved experience to the end-consumer when these buying and using furniture or kitchen cabinets.



Gieffe



FGV Slovakia, Spol s r.o.



FGVTN Brasil LTDA.



FGV Guangzhou



Formenti & Giovenzana S.p.A.





Ten

The Space Wonder

Design and elegance

State-of-the-art technology

Perfect space management

Solutions for every application

Drawers are today one of the most important means for space management in modern kitchen and bathroom. Ten is the new benchmark in affordable high quality and high performance double wall drawer technology. Ten is a complete range covering all usual applications with clever solutions, Italian design and elegance. The name Ten stands for fulfillment of the highest criteria where every detail counts. The state-of-the-art conception, the use of environmental friendly materials and production solutions together with the known focus of Formenti & Giovenzana on the most cost efficient process confer to this new product the best possible rating: 10/10.



The story behind Ten

- 1 Excellent design**
Timeless shape, cure of every detail, choice of colours and materials deliver a perfect object
- 2 State of the art technology**
Full extension sliding system with Dual-Synchro and SlowMotion^{FR} damping technology and ease of assembly and adjustment
- 3 Outstanding performance**
High loading capacity throughout the range, extreme side stability and perfect gliding
- 4 Complete range**
All required dimensions, full range of backs in different heights, EasyFix railing system, English drawer
- 5 Large accessory program**
Separator tubes, flap system, plate holder, cutlery trays, waste bin system, undersink solutions
- 6 Multiple supply system**
Industrial supply in Boomerang trays, standard packing in 10, individual kit and personalised packs
- 7 Customisation**
Steel side wall, material mix side panels, customised glass walls and no limit to creativity
- 8 Motorisation**
Electromechanical OneTouch system E-Drive with dual triggering, backup battery and Nanny children safety
- 9 Assembly machine**
Automatic assembly machine for fast, secure and precise assembly of drawer components and bottom
- 10 Ecology**
Low carbon footprint production process, low impact finishing system, recyclable Boomerang transport tray and use of ecologically sustainable materials



Ten



Arguments to choose **Ten**



Elegance and design

Ten is the new reference in terms of elegance and design on double-wall drawers. The timeless design will last without losing appeal. Slim shape and perfect curves confer a very elegant look. The drawer comes in two absolutely trendy colours: Silver Champagne and Polar White. Silver Champagne marries perfectly with wood and current design trends, whilst having a high end appeal. The smart look of Polar White is in line with new tendencies and signals cleanliness and simplicity. All accessories are realised with a clean design language which signals strength and durability. The colour match of plastic and metal pieces, the controlled gaps between the components and the elegant gliding signal quality. No unnecessary hole is left visible. In the ArtLine finish, Art is entering into drawer design.

Space management at its best

The very elegant railing system benefits from the new steel back design. Strong and elegant, it hosts an EasyFix fixation on the top corners. The front fixing of the railing itself is quick and intuitive to speed up assembly time in the factory. Special solutions for under-sink and for English drawers as well as the Netto waste bin sets are obvious parts of the Ten program. Second born to DolceVita, the innerware solution of FGV, Ten benefits from its spirit of customisation. Starting with the elegant and easy to use steel side panel, the new DolceVita custom concept allows the use of an incredible material mix to customise the look. Wood, aluminium, steel, glass are only a few. Especially the ArtLine concept is giving unexpected customisation possibilities.



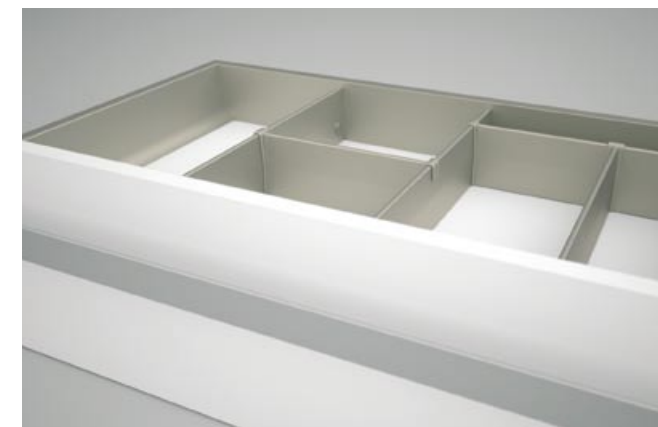
Technology & Functionality

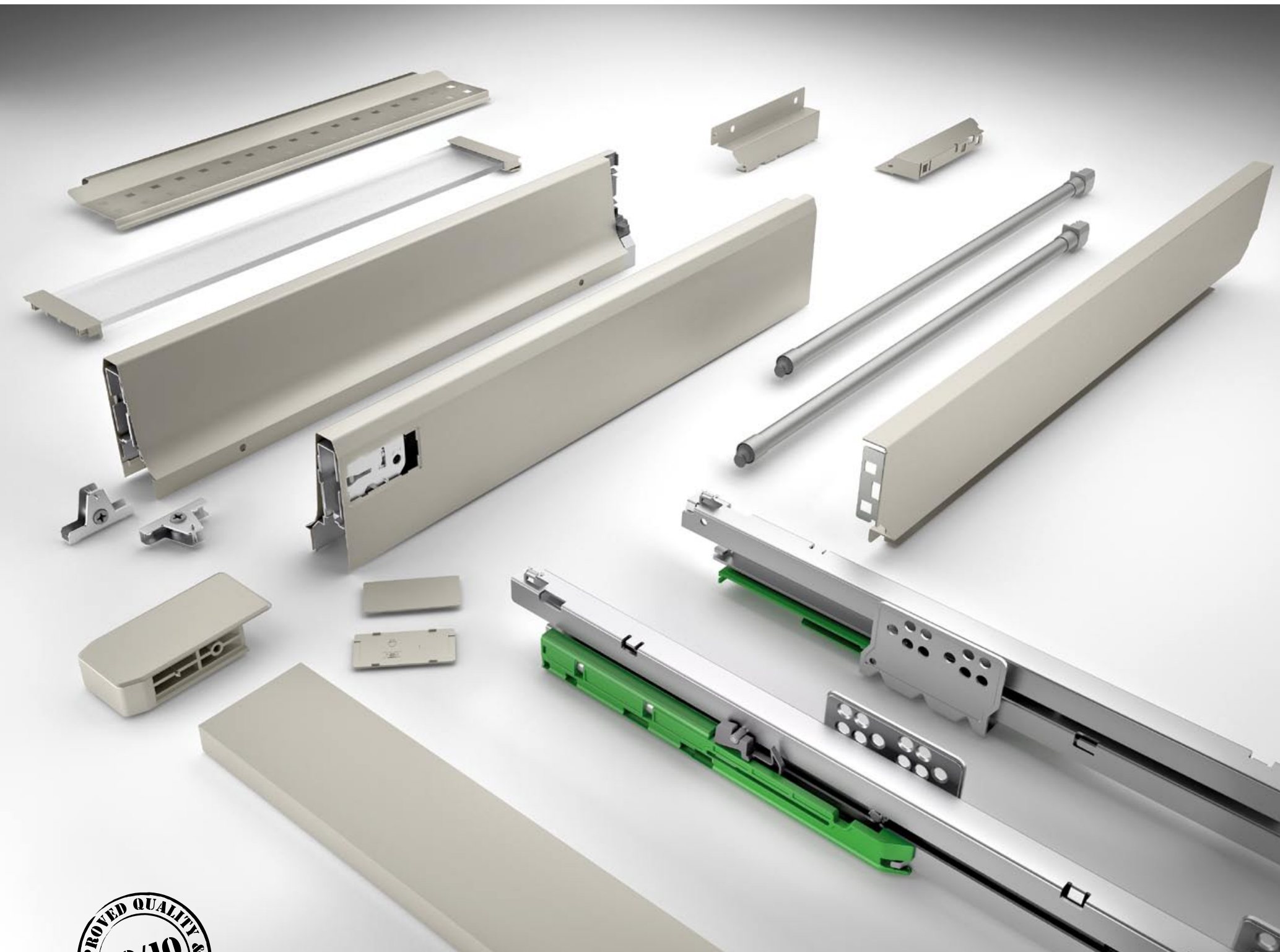
Benefiting from the latest technological solutions in terms of production and performance, Ten turns every kitchen or bathroom into a space management machine. The drawer is powered by an all new full extension sliding system with a load capacity of 45kg throughout the range, with Dual-Synchro stabilisation for noiseless sliding and a most powerful stop close damper for perfect showroom effect and long lasting function. Self-adjusting in depth, the front fix technology allows OneStep 2-D adjustment via cams and a easy assembly and disassembly of the front. Fast assembly on brand new MAC 10 AV machine with no groove on bottom panel. Technology and functionality at the highest level, thanks also to a fully automatic production facility in Italy, flexible machine set-up and great care for all ecological aspects. All this turns Ten into the class winner in double-wall drawers.



Full range and all accessories

Planned as a flexible system from the beginning on, Ten covers all dimensions from 250 to 550 mm to suit into bathroom, kitchen and elsewhere. The range comprises steel back panel in 90, 150 and 200 mm height to fit every application. It is completed with very elegant and strong fixing brackets for wooden back panels in the same three heights. For use as English drawers behind doors, front brackets for simple height and for the use of railings as well can be combined with an elegant front profile or a wooden front panel. The new and clever Matrix System is helping to manage the internal space of the Ten drawer system. Every application in kitchen, bathroom or elsewhere is covered with Ten.

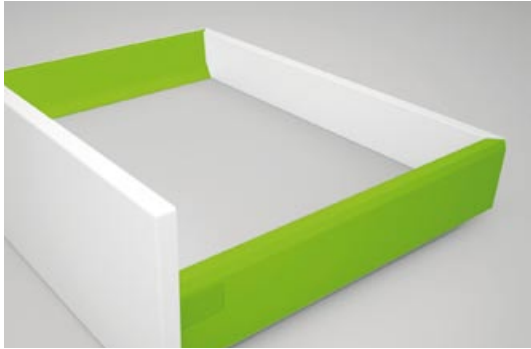




Index

| | |
|--|-------|
| Ten drawer & front attachments | 12-13 |
| Ten high performance slides | 14-15 |
| Back panels & back fixing brackets | 16-17 |
| Railings, separation tubes & flaps | 18-19 |
| Steel & crystal side panels | 20-21 |
| IN – the internal drawer solutions | 22-23 |
| Acquario – the under sink solution | 24-25 |
| Netto – the waste bin solution | 26-27 |
| E-Drive – the electro mechanic OneTouch system | 28-29 |
| Ten standard kit | 30-31 |
| Machines & equipment for efficient work with Ten | 32-33 |
| Instructions for use | 34 |
| Customisation | 35 |
| Index of parts & codes | 36-37 |

Ten drawer and front attachments



Double wall steel drawer height 95mm, epoxy finish with strong design features and state of the art technology

Benefits for the industry

- large range of depth from 250 to 550 mm standard
- all steel front fixing mechanism for strong and secure fixing
- straight front presentation and tolerant self-attracting feature
- 3-D front adjustment in the front fixing mechanism
- steel slide fixing for high slam-open resistance and transport safety
- bottom fixing via peg or screws without processing on the panel
- bottom panel and back panel with identical dimensions
- decorative flush side cap with possibility of customisation
- eco-friendly boomerang packing

Benefits for the consumer

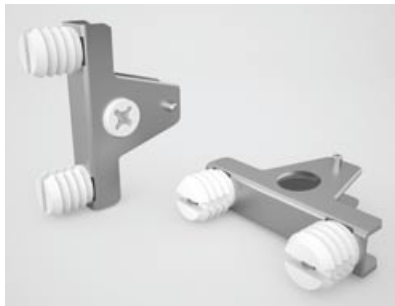
- two standard finishes Polar White for clean look and Silver Champagne for high end look and perfect match for wooden and modern finishes
- optimised inner space thanks to straight outer face and ergonomic curved and access friendly inner face
- easy to clean thanks to hygienic bottom lip and clean adjustment of every connection
- GreenSilver® technology for low carbon footprint production process and 100% recycle ability for reduced ecological impact

| Code | Description | Packing |
|--|----------------------------------|----------|
| 58.X0A0.**.25.00000 | Left and right drawer side 250 | 10 sets |
| 58.X0A0.**.27.00000 | Left and right drawer side 270 | 10 sets |
| 58.X0A0.**.35.00000 | Left and right drawer side 350 | 10 sets |
| 58.X0A0.**.40.00000 | Left and right drawer side 400 | 10 sets |
| 58.X0A0.**.45.00000 | Left and right drawer side 450 | 10 sets |
| 58.X0A0.**.50.00000 | Left and right drawer side 500 | 10 sets |
| 58.X0A0.**.55.00000 | Left and right drawer side 550 | 10 sets |
| <i>** colour codes: F1 = Polar White / S6 = Silver Champagne</i> | | |
| <i>Each pack contains 10 left and 10 right drawer sides and 20 cover caps</i> | | |
| <i>Industrial packing in Boomerang containers and individual kit packings on request</i> | | |
| 58.AX10.07.0000000 | Set of Ten screw-on front fixing | 100 sets |
| 58.AX20.07.0000000 | Set of Ten knock-in front fixing | 100 sets |

Each pack contains 100 left and 100 right front holders

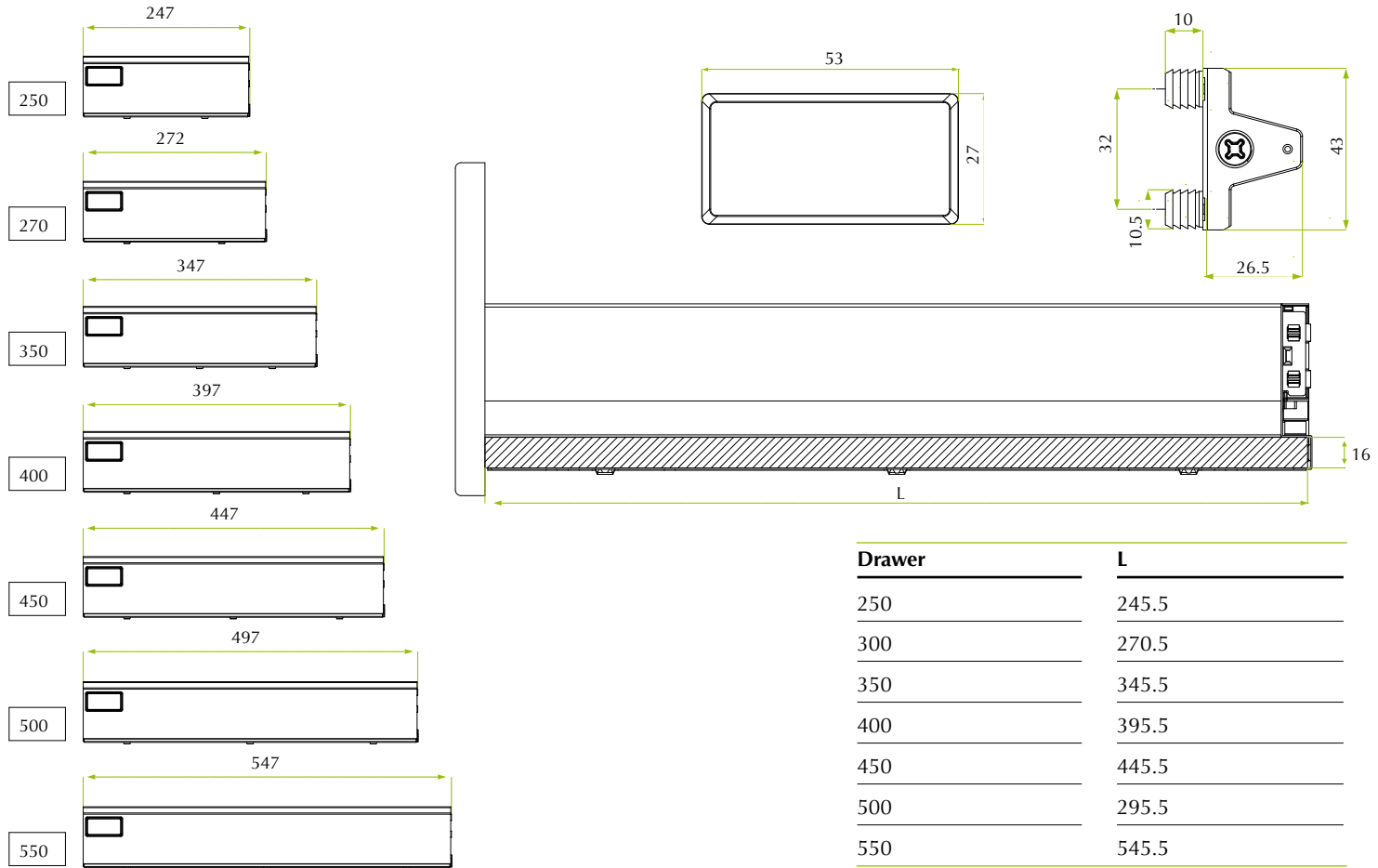
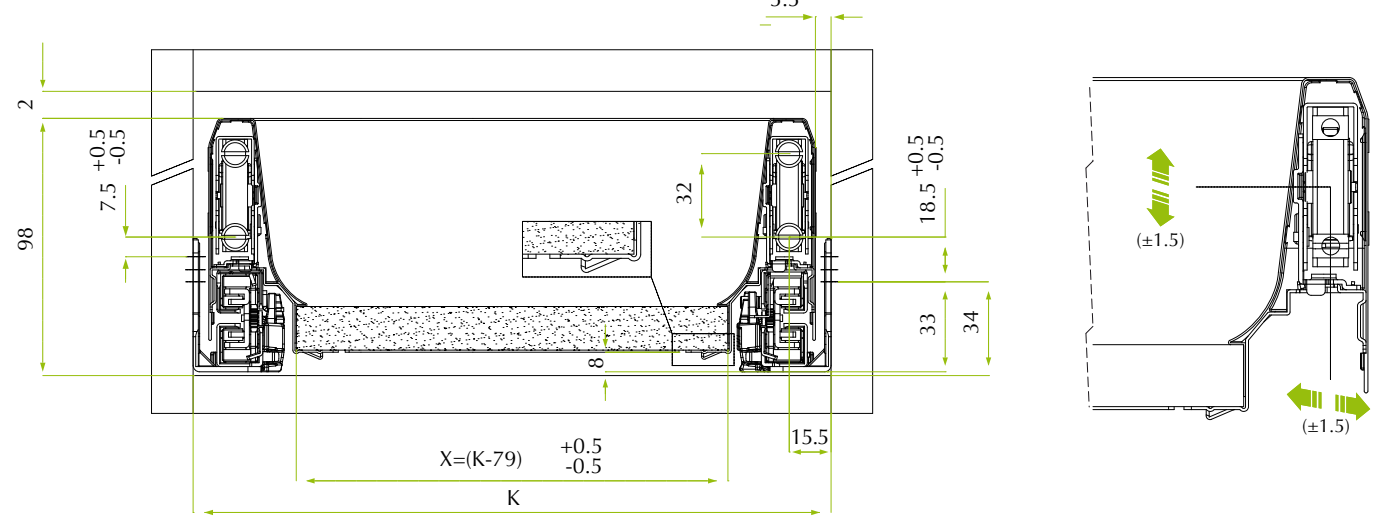


Screw-on front fix

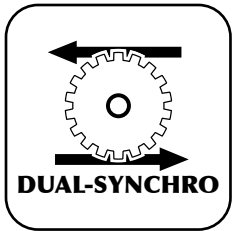
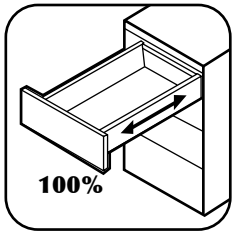
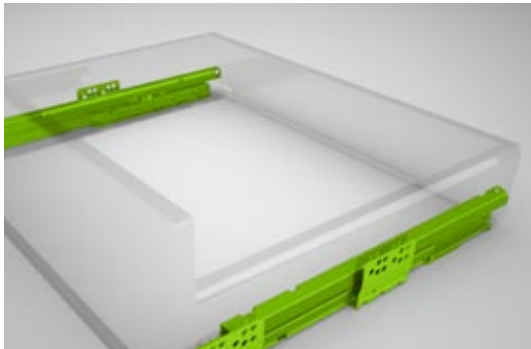


Knock-in front fix for 10 mm hole

Front drilling & dimensions



| Drawer | L |
|--------|-------|
| 250 | 245.5 |
| 300 | 270.5 |
| 350 | 345.5 |
| 400 | 395.5 |
| 450 | 445.5 |
| 500 | 295.5 |
| 550 | 545.5 |



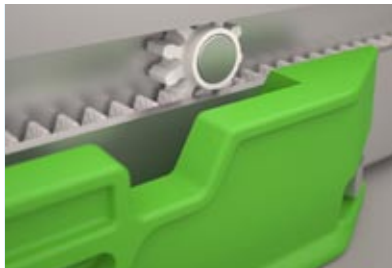
Full extension damped slides in zink finish for high performance and smooth action

- Benefits for the industry**
- large range of length from 250 to 550 mm standard
 - high 45 kg standard load for ease of use throughout the applications
 - high side stability thanks to Dual-Synchro® rack-and-pignon for smooth action
 - new generation SlowMotion® damping with long damping way and FinalRelease® feature for guaranteed drawer closure under adverse conditions
 - very stiff construction for low drop under load
 - slide-click fixing of drawer on the slide for easy and safe connection

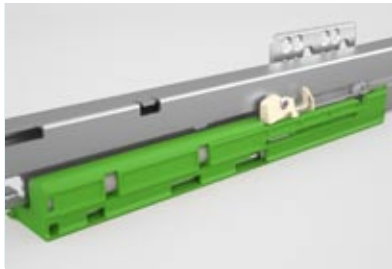
- Benefits for the consumer**
- very smooth action and increased glide ability thanks to new wheel design and materials
 - adaptive SlowMotion® damping for silent and majestic closing under all load circumstances
 - long lasting life thanks to high quality material and performant design

| Code | Description | Packing |
|---------------------|--------------------------------|---------|
| 58.XEF0.07.25.X0000 | Left and right drawer side 250 | 10 sets |
| 58.XEF0.07.27.X0000 | Left and right drawer side 270 | 10 sets |
| 58.XEF0.07.35.X0000 | Left and right drawer side 350 | 10 sets |
| 58.XEF0.07.40.X0000 | Left and right drawer side 400 | 10 sets |
| 58.XEF0.07.45.X0000 | Left and right drawer side 450 | 10 sets |
| 58.XEF0.07.50.X0000 | Left and right drawer side 500 | 10 sets |
| 58.XEF0.07.55.X0000 | Left and right drawer side 550 | 10 sets |

Each pack contains 10 left and 10 right drawer slides
Option for heavy duty slides for up to 65 kg on request (December 2010)



Dual-Synchro®
for high side stability

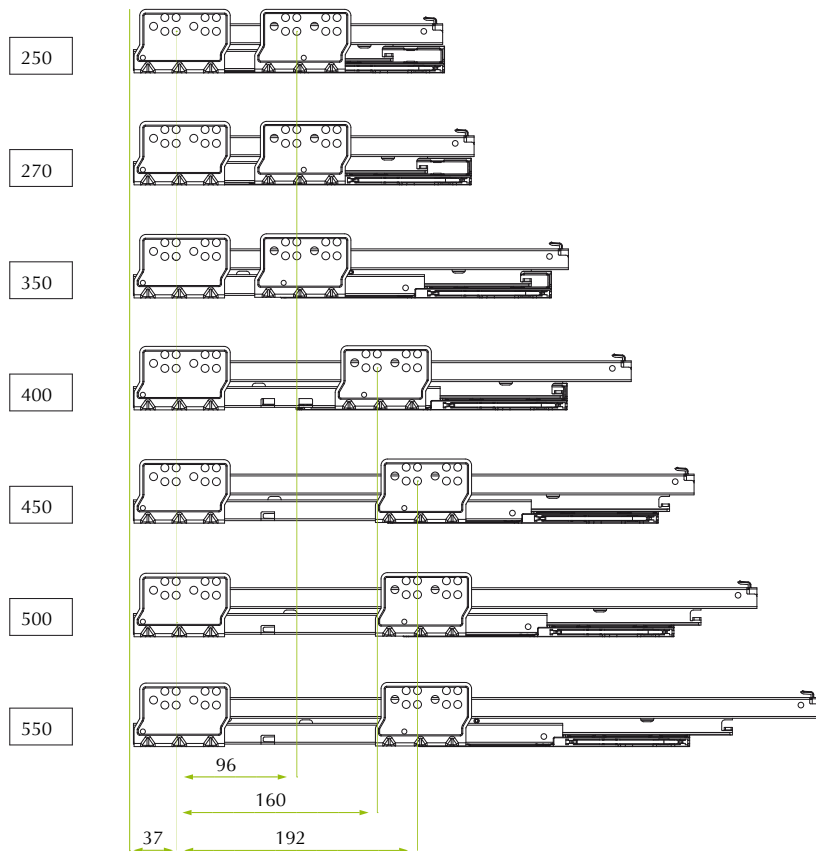
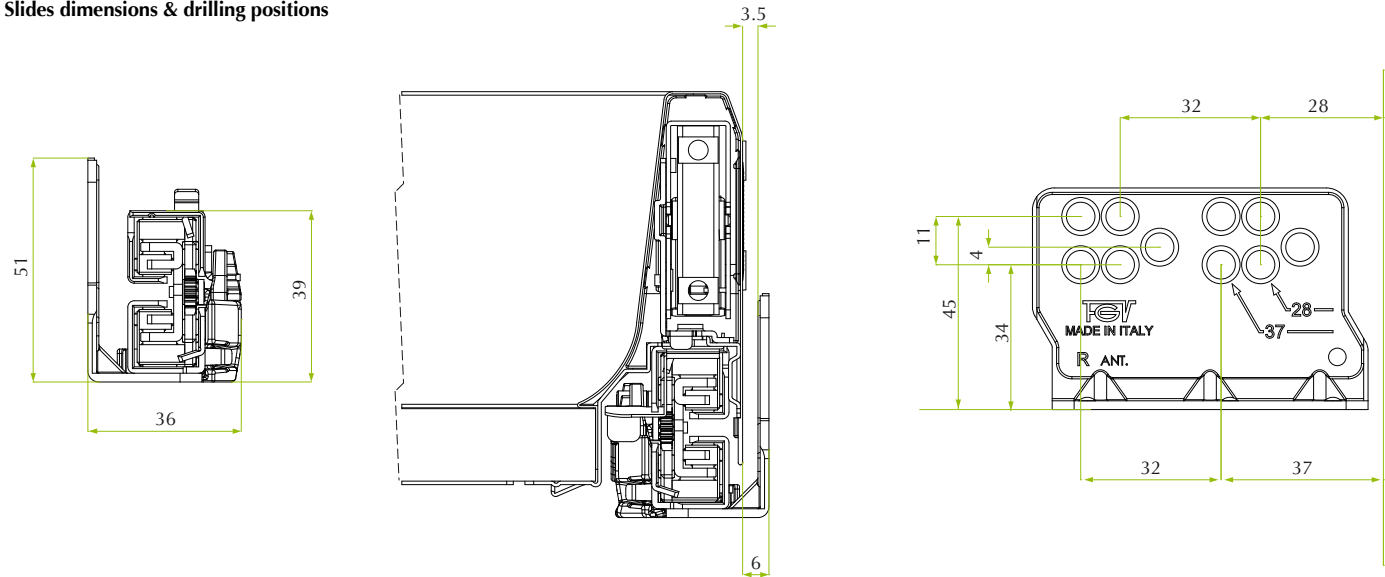


SlowMotion®
adaptive damping

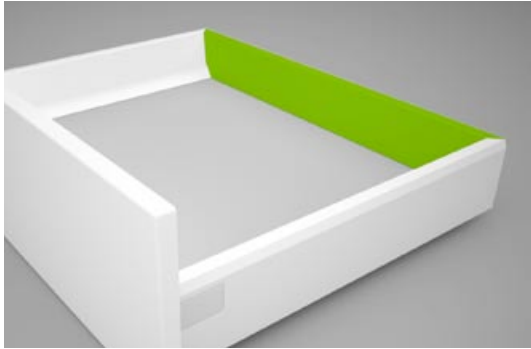


Tool less slide-fixing
of drawer on slide

Slides dimensions & drilling positions



Back panels and back fixings



Steel back panel in epoxy finish for consistent look and strong construction

Benefits for the industry

- three heights: 90, 150 and 200 mm in standard
- ten widths from 300 to 1200 mm in standard
- dimensions available for 15, 16, 18 and 19 mm cabinet panel thickness
- special dimensions possible
- thick material for strong construction and stability

Benefits for the consumer

- two standard finishes matching perfectly the drawer finish: Polar White and Silver Champagne
- perfect side finish and suppression of all open holes for high quality perception

Steel back fixings in epoxy finish for versatility in dimensions and design

Benefits for the industry

- three heights: 90, 150 and 200 mm in standard
- recovering lip all around to hide panel splintering
- highest dimension available open on the top for use of extra-high wooden backs
- same dimensions for wooden back and bottom for standardisation in production

Benefits for the consumer

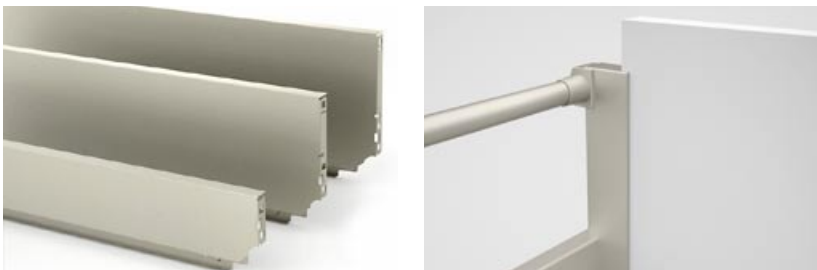
- two standard finishes matching perfectly the drawer finish: Polar White and Silver Champagne
- perfect side finish and suppression of all open holes for high quality perception

| Code | Description | Packing |
|---------------------|---|-----------|
| 58.PXPA.F1.^- -.000 | Polar steel back panel H 90 | 20 pieces |
| 58.PXPA.S6.^- -.000 | Silver Champagne steel back panel H 90 | 20 pieces |
| 58.PXPC.F1.^- -.000 | Polar White steel back panel H 150 | 10 pieces |
| 58.PXPC.S6.^- -.000 | Silver Champagne steel back panel H 150 | 10 pieces |
| 58.PXPS.F1.^- -.000 | Polar White steel back panel H 200 | 10 pieces |
| 58.PXPS.S6.^- -.000 | Silver Champagne steel back panel H 200 | 10 pieces |

^^ back panel width: 30/35/40/45/50/60/80/90/10/12 (example 45 stands for 450 mm cabinet width)
-- panel thickness: 15/16/18/19 (mm)
Each pack contains the indicated number of back panels

| | | |
|--------------------|---|---------|
| 58.AXPA.**.0000000 | Set of steel back fixing H 90 | 50 sets |
| 58.AXPC.**.0000000 | Set of steel back fixing H 150 | 50 sets |
| 58.AXPC.**.L000000 | Set of steel back fixing only for Acquario solution H 150 | 10 sets |
| 58.AXPS.**.0000000 | Set of steel back fixing H 200 | 50 sets |
| 58.AXPS.**.U000000 | Set of steel back fixing top open H 200 | 50 sets |

** colour codes: F1 = Polar White / S6 = Silver Champagne
Each pack contains the indicated number of fixing brackets



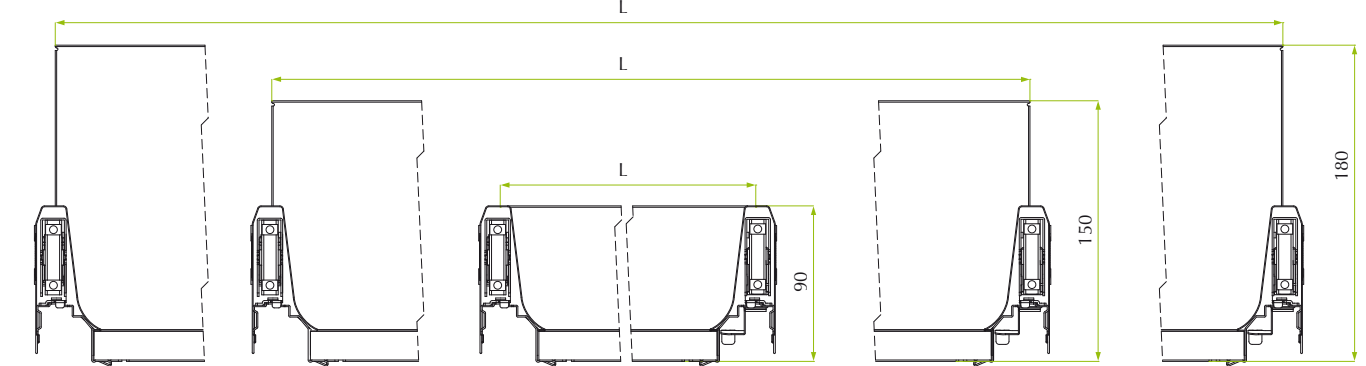
Three back panel heights

One top open version H 200



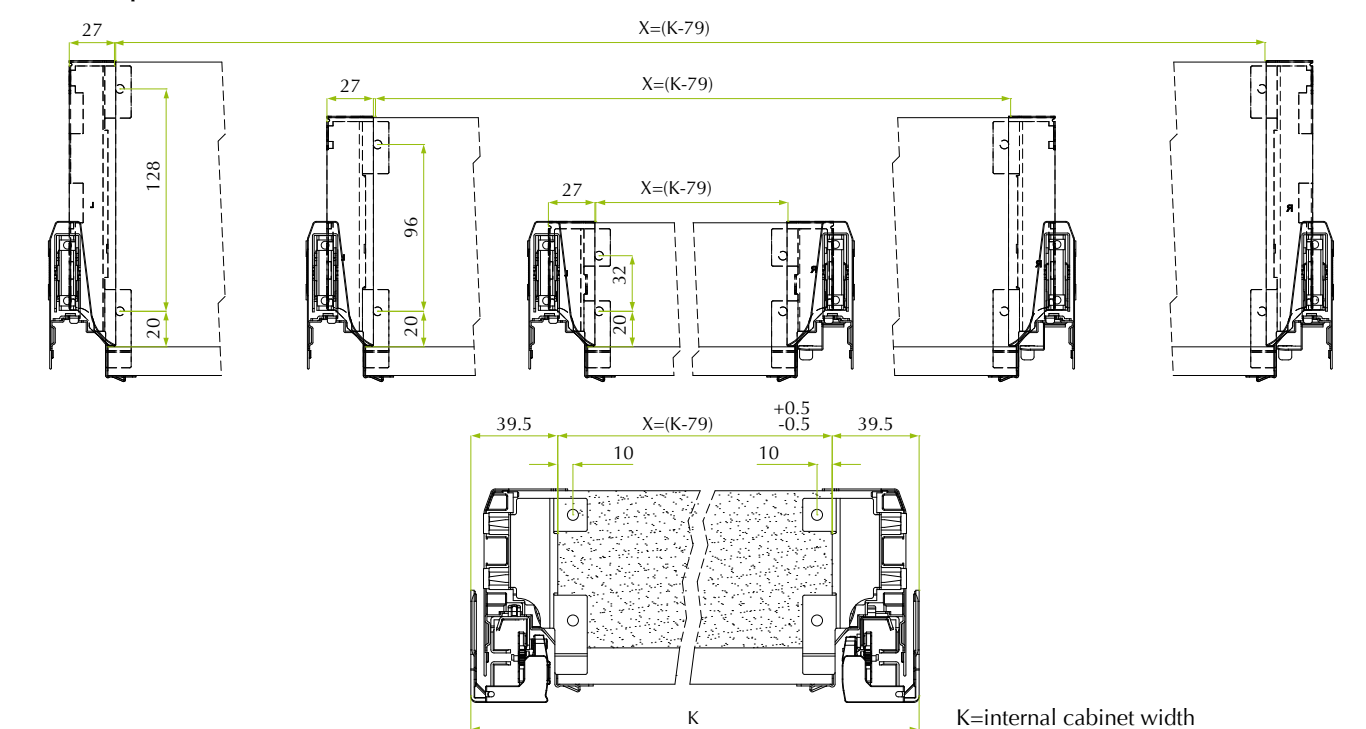
Three back fixing heights

Steel back panel



| Panel thickness | L | | | | | | | | | |
|-----------------|-------|-------|-------|-------|-------|-------|-------|-------|--------|--|
| 19 | 227.5 | 277.5 | 377.5 | 427.5 | 527.5 | 727.5 | 827.5 | 927.5 | 1127.5 | |
| 18 | 229.5 | 279.5 | 379.5 | 429.5 | 529.5 | 729.5 | 829.5 | 929.5 | 1129.5 | |
| 16 | 233.5 | 283.5 | 383.5 | 433.5 | 533.5 | 733.5 | 833.5 | 933.5 | 1133.5 | |
| 15 | 235.5 | 285.5 | 385.5 | 435.5 | 535.5 | 735.5 | 835.5 | 935.5 | 1135.5 | |
| Cabinet width | 300 | 350 | 450 | 500 | 600 | 800 | 900 | 1000 | 1200 | |

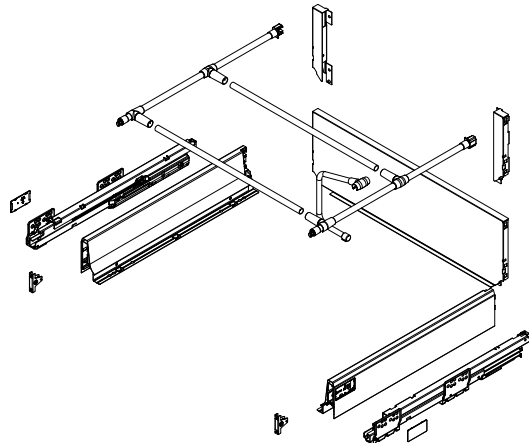
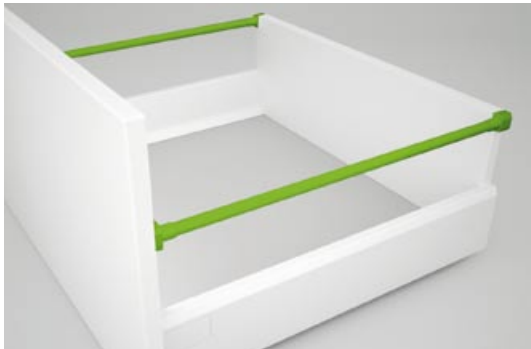
Wooden back panel



K=internal cabinet width



Railings, separation tubes and flaps



Steel railing bars in epoxy finish for perfect volume management and strong construction

Benefits for the industry

- seven dimensions adapted to each drawer depth
- EasyFix front fixing for strong, quick and easy assembly or screw-on fixing
- simple click-on bracket for safe back fixing on panel or bracket
- integrated inclination adjustment for +/- 3mm

Benefits for the consumer

- two standard finishes matching perfectly the drawer finish: Polar White and Silver Champagne
- colour and finish of plastic covers enhances quality feel
- excellent side retention in high drawer applications
- choc protection in case of use of glass side panels (page 20-21)

Steel transversal tubes in epoxy finish for more versatility

Benefits for the industry

- seven dimensions for all drawer width
- easy and strong clip on fixing

Benefits for the consumer

- two standard finishes matching perfectly the drawer finish: Polar White and Silver Champagne
- ease of adjustment for improved space management inside the drawer

| Code | Description | Packing |
|---|--------------------------------|-----------|
| 58.RX01.**.°.00000 | Set of steel railing EasyFix | 20 sets |
| 58.RX03.**.°.00000 | Set of steel railing screw-on | 20 sets |
| 58.RXT0.**.^°.00000 | Steel transversal railing | 20 pieces |
| <i>** colour codes: F1 = Polar White / S6 = Silver Champagne</i> | | |
| <i>°. railing tube dimensions: 25/27/35/40/45/50/55 (example 27 stands for 270 mm drawer depth)</i> | | |
| <i>^^ drawer width: 30/35/40/45/50/60/80/90/10/12 (example 45 stands for 450 mm drawer width)</i> | | |
| <i>Each pack contains the indicated number of railings</i> | | |
| 58.AXL0.**.0000000 | Set of L shaped tube connector | 20 sets |
| 58.AXT0.**.0000000 | Set of T shaped tube connector | 20 sets |
| <i>Each pack contains the indicated number of connector</i> | | |
| 58.DXC1.**.0000000 | Steel flap for H 150 back | 20 pieces |
| 58.DXS1.**.0000000 | Steel flap for H 200 back | 20 pieces |
| <i>** colour codes: F1 = Polar White / S6 = Silver Champagne</i> | | |
| <i>Each pack contains 20 flaps equipped with top fixing and bottom feet</i> | | |



EasyFix and screw-on railing

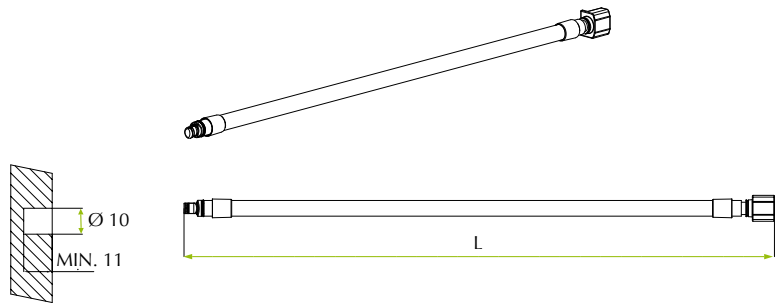


Transversal railing with bracket



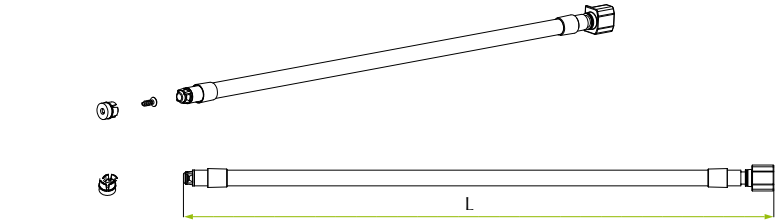
Steel flaps H 150 and H 200

EasyFix railing



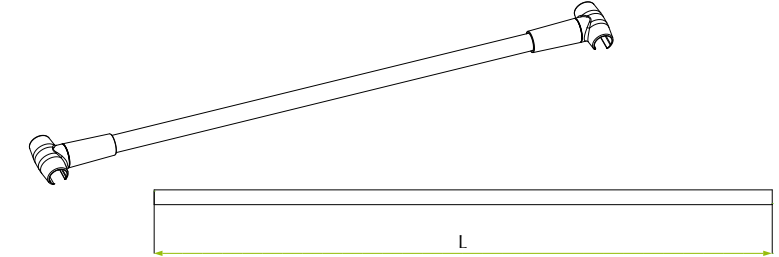
| Drawer depth | L |
|--------------|-----|
| 250 | 242 |
| 270 | 267 |
| 350 | 342 |
| 400 | 392 |
| 450 | 442 |
| 500 | 492 |
| 550 | 542 |

Screw-on railing



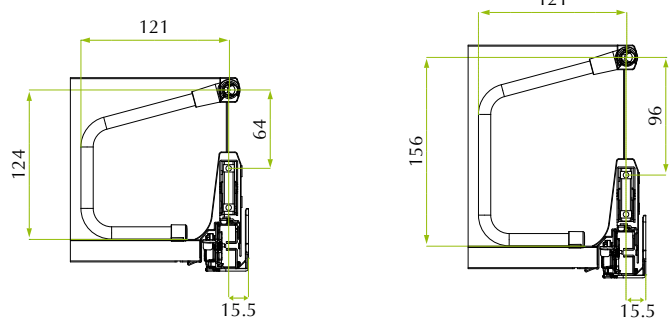
| Drawer depth | L |
|--------------|-----|
| 250 | 256 |
| 270 | 281 |
| 350 | 356 |
| 400 | 406 |
| 450 | 456 |
| 500 | 506 |
| 550 | 556 |

Transversal railing

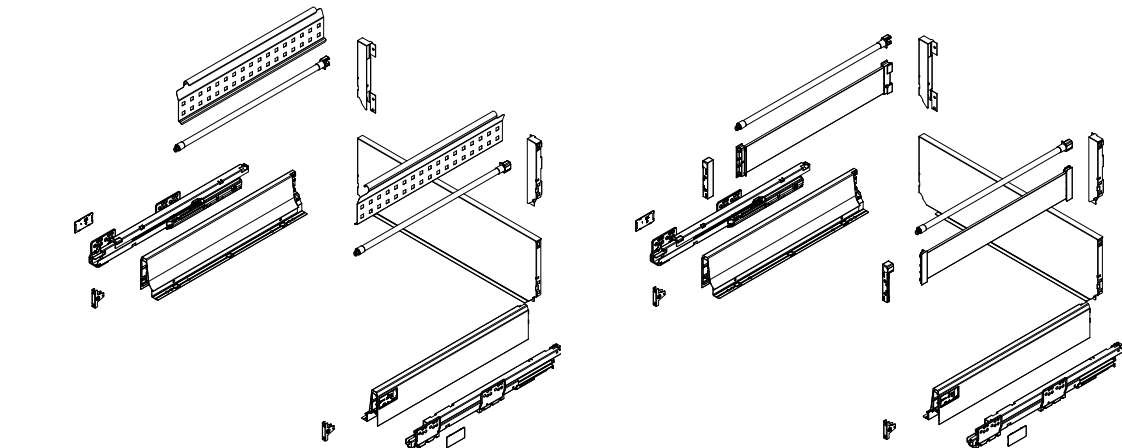
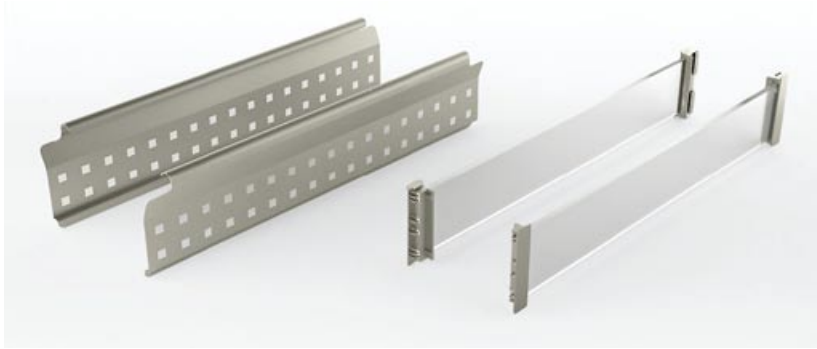


| Drawer width | Panel thickness | L |
|--------------|-----------------|------|
| 1200 | 15/16/18/19 | 1108 |
| 1000 | 15/16/18/19 | 908 |
| 900 | 15/16/18/19 | 808 |
| 800 | 15/16/18/19 | 708 |
| 700 | 15/16/18/19 | 608 |
| 600 | 15/16/18/19 | 508 |
| 500 | 15/16/18/19 | 408 |
| 450 | 15/16/18/19 | 358 |
| 400 | 15/16/18/19 | 308 |
| 350 | 15/16/18/19 | 258 |
| 300 | 15/16/18/19 | 208 |

Steel flap



Crystal and steel side panels



Steel side panel in epoxy finish for perfect volume management

Benefits for the industry

- three standard dimensions 450, 500, 550 mm
- reversible left/right for less references
- easy clip-over on railing tube and magnetic retention on the bottom
- doesn't interfere with front adjustment and self-adapts in height
- design customisable on request

Benefits for the consumer

- two standard finishes matching perfectly the drawer finish: Polar White and Silver Champagne
- excellent side retention in high drawer applications

| Code | Description | Packing |
|--|-------------------------------|---------|
| 58.SXM0.**.45.00000 | Set of steel side panel 450 | 5 sets |
| 58.SXM0.**.50.00000 | Set of steel side panel 500 | 5 sets |
| <i>** colour codes: F1 = Polar White / S6 = Silver Champagne Each pack contains 10 steel side panels</i> | | |
| 58.SXV●.**.45.00000 | Set of crystal side panel 450 | 5 sets |
| 58.SXV●.**.50.00000 | Set of crystal side panel 500 | 5 sets |
| <i>** colour codes: F1 = Polar White / S6 = Silver Champagne • crystal colours: C = crystal clear, M = crystal opaque, A = crystal ArtLine Other colours and ArtLine prints on request. Each pack contains 5 left and 5 right crystal side panels This product needs the use of the H 200 back (page 16-17) and the railing tubes (page 18-19)</i> | | |

Crystal side panel for elegant space management

Benefits for the industry

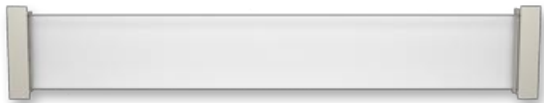
- two standard dimensions 450, 500 mm
- very quick assembly slide-in fixing on the back and fixing bracket on the front
- compatible with standard railing
- doesn't interfere with front adjustment and self-adapts in height
- design customisable on request

Benefits for the consumer

- confers a high end look to the whole space
- excellent side retention in high drawer applications
- matches the look and feel of the DolceVita innerware range
- safety glass for high security



Steel side panel

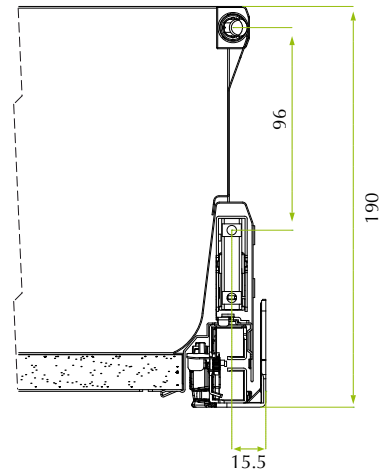
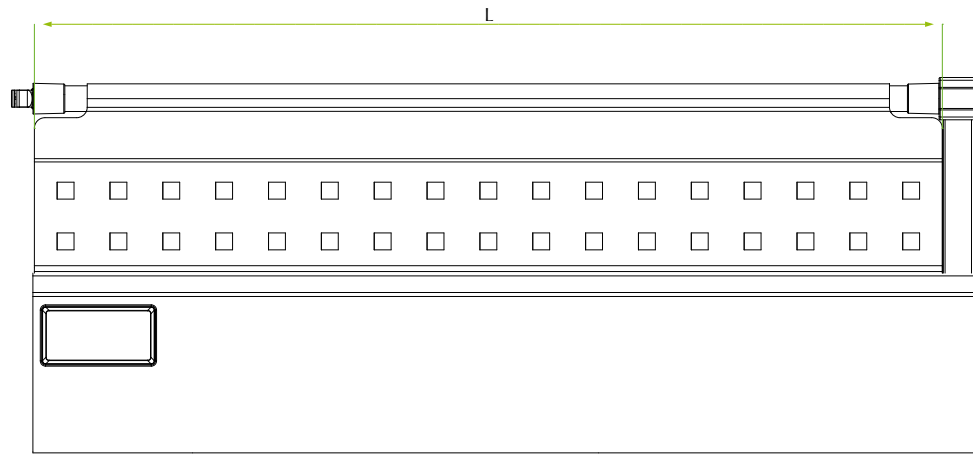


Transparent crystal panel



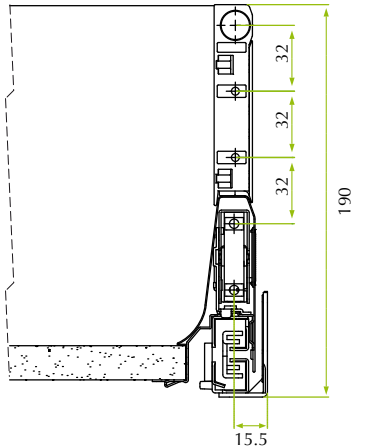
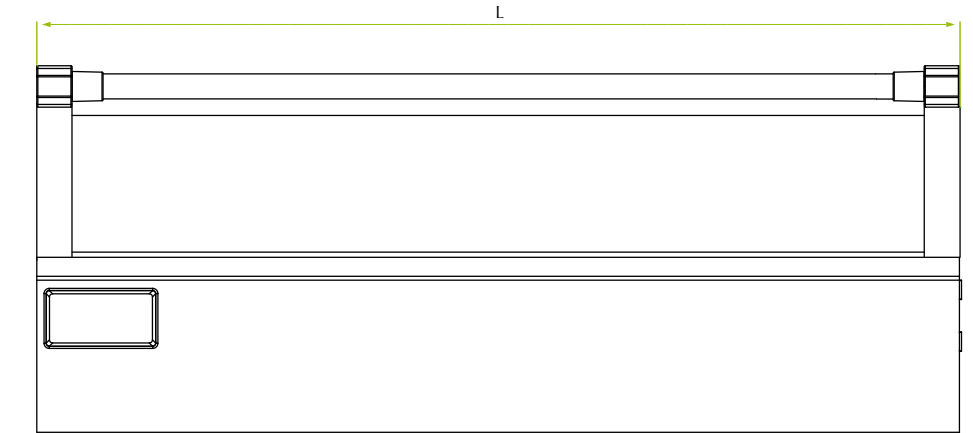
ArtLine crystal panel

Steel side panel



| Drawer depth | L |
|--------------|-------|
| 450 | 429,5 |
| 500 | 475,5 |

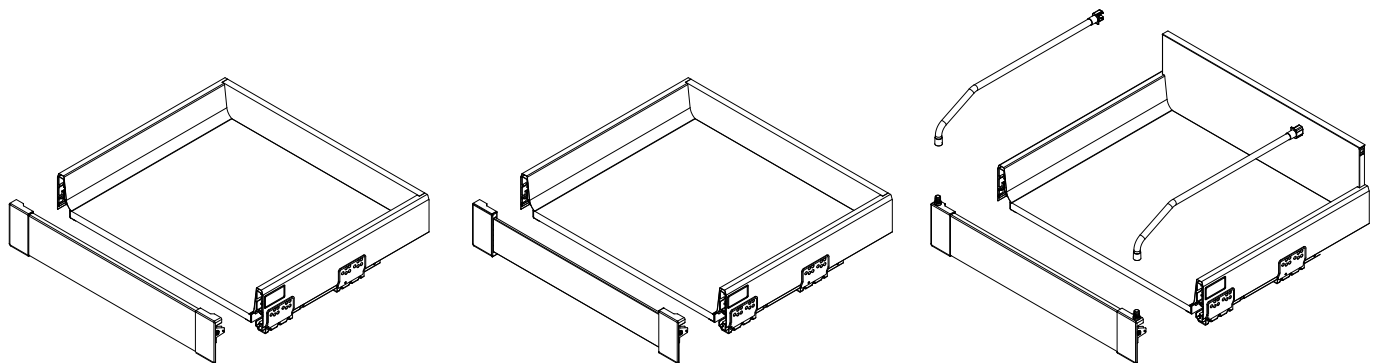
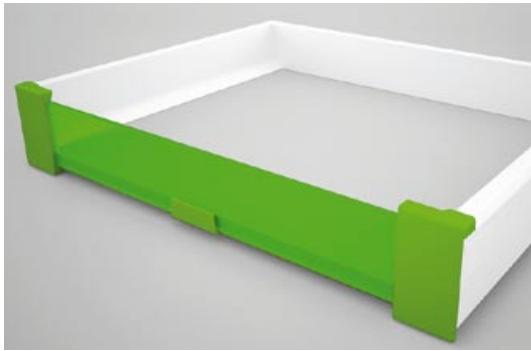
Crystal side panel



| Drawer depth | L |
|--------------|-----|
| 450 | 447 |
| 500 | 497 |



IN internal drawers



IN kit for 4-sided internal drawers for elegant and practical function

Benefits for the industry

- available for 9 standard drawer width
- the same system hosts aluminium, crystal and wooden fronts
- no need for edge banding on the front of the drawer bottom panel
- every English front can be easily adapted in width to every cabinet material thickness (15, 16, 18, 19 mm)
- standard clip on function for ease of assembly
- central front holder for large drawers (recommended from 800 mm on)
- design of the crystal front customisable on request (see page 35)

Benefits for the consumer

- two standard finishes matching perfectly the drawer finish: Polar White and Silver Champagne
- very practical function behind turning or sliding doors
- secure crystal versions thanks to Safety glass
- high-end look thanks to elegant materials and perfect finishing

IN kit for 4-sided internal high drawer for optimum space management

Benefits for the industry

- railing in epoxy finish with EasyFix on back panel/bracket and plug-in on front brackets

Benefits for the consumer

- improved space management and perfect side retention for high content
- elegant solution in line with the overall design of the drawer
- compatible with transversal railing and flaps from page 18-19

| Code | Description | Packing |
|---------------------|--|---------|
| 58.AX40.**.0000000 | Set of front brackets for standard IN drawer | 50 sets |
| 58.AX4R.**.0000000 | Set of front brackets for IN drawer with railing | 50 sets |
| 58.RX02.**.°.000000 | Set of railing tubes for IN drawer | 10 sets |

** colour codes: F1 = Polar White / S6 = Silver Champagne
° railing tube dimensions: 45/50/55 (example 50 stands for 550 mm drawer depth)

| | | |
|--------------------|-------------------------|-----------|
| 58.PX4A.**.0000000 | Aluminium front profile | 10 pieces |
| 58.PX4A.♦♦.0000000 | Crystal front profile | 10 pieces |

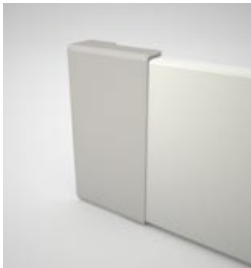
** Aluminium colours: F1 = Polar White / S6 = Silver Champagne
♦♦ Crystal colours: 0C = crystal clear, 0M = crystal opaque, 0A = crystal ArtLine
Other colours and ArtLine prints on request.
Front profile AluLine and WoodLine on request.
For front profile up to 800 mm central front holder included.



Standard solution



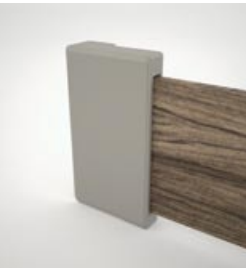
Railing solution



Aluminium solution

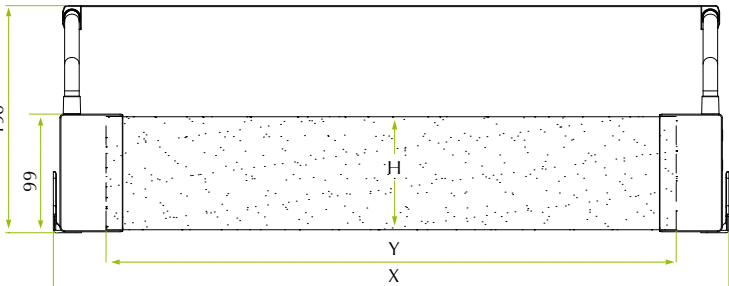
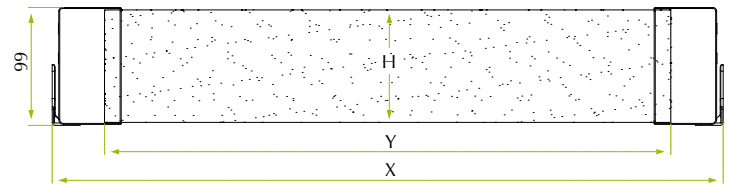
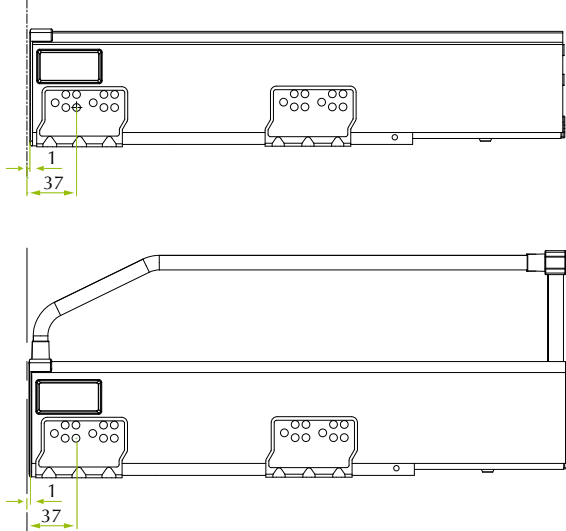


Crystal solution

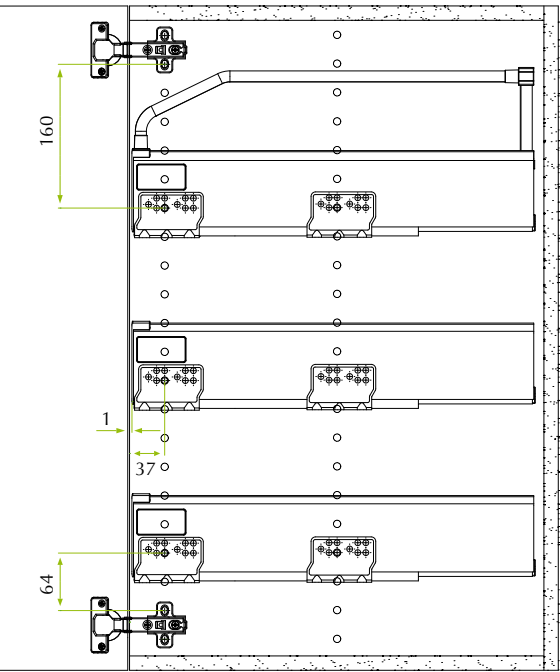


Wooden solution.
Wooden panel not supplied

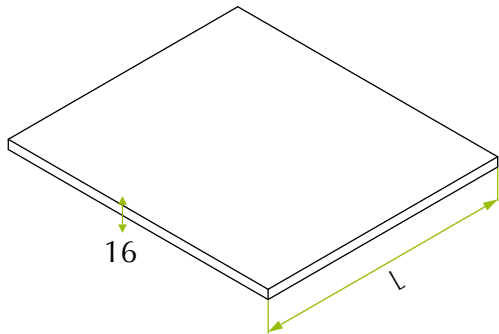
Drilling & front dimensions



Aluminium profile H 94.7, crystal & wooden profile H 78

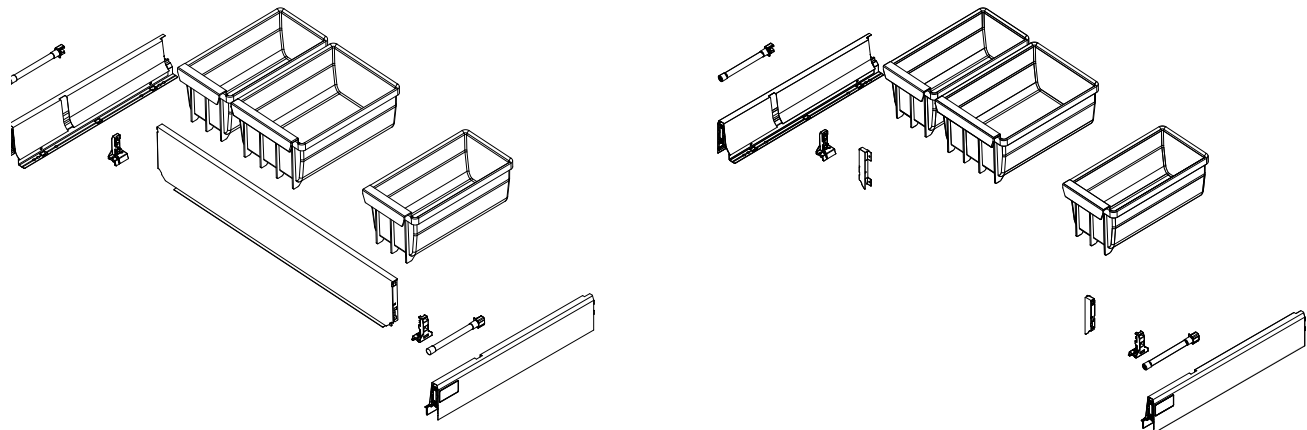
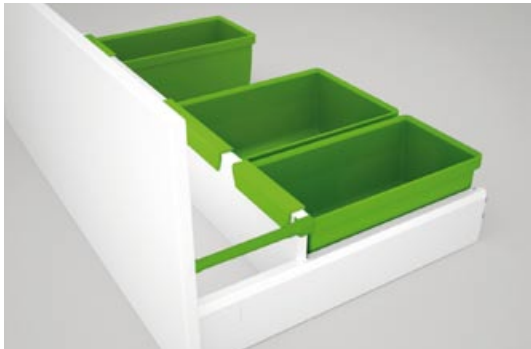


| Drawer depth | Bottom lenght L | |
|--------------|-----------------|------------------------|
| | Alu front | Crystal & Wooden front |
| 450 | 445.5 | 437 |
| 500 | 495.5 | 487 |
| 550 | 545.5 | 537 |



| Drawer width | Front lenght Y | |
|--------------|----------------|------------------------|
| | Alu Front | Crystal & Wooden front |
| 300 | 173 | 169 |
| 350 | 223 | 219 |
| 400 | 273 | 269 |
| 450 | 323 | 319 |
| 500 | 373 | 369 |
| 600 | 473 | 469 |
| 800 | 673 | 669 |
| 900 | 773 | 769 |
| 1000 | 873 | 869 |

Acquario under sink solution



Acquario under sink drawer solution in epoxy finish for perfect space management around the siphon

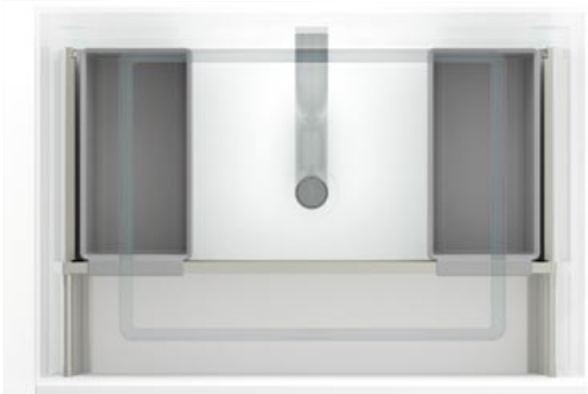
Benefits for the industry

- available for standard depth 450 mm
- drilling position identical for 450, 500, 550 mm slides
- requires only a different set of drawer sides
- works with standard back panels and/or standard back fixings from catalogue page 16-17
- rear containers clip on and slides to be able to optimise the space

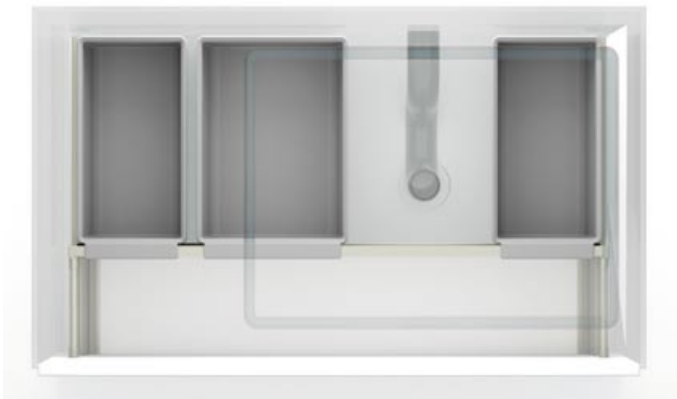
Benefits for the consumer

- two sizes of ABS containers to optimise the back space wherever the siphon is situated (up to a record 85% space usage)
- large container with lid for increased protection
- removable containers for ease of cleaning and increased hygiene in wet environment

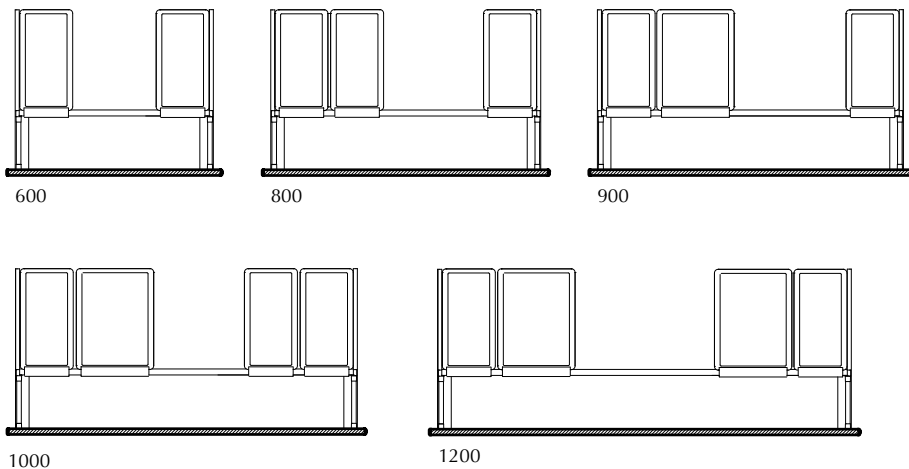
| Code | Description | Packing |
|---|--------------------------|-----------|
| 58.XLA1.**.45.00000 | Acquario drawer kit 450 | 10 kits |
| <i>** colour codes: F1 = Polar White / S6 = Silver Champagne</i> | | |
| <i>Each pack contains 10 pairs of special drawer sides, 20 cover caps, 20 special railing tubes with screw-on fixing (or dowels supplied)</i> | | |
| <i>For front brackets, see page 12-13 and for aluminium back panel H 150 see page 16-17</i> | | |
| <i>For wooden back, use special Acquario steel back fixing H 150 from page 16-17. Wooden back not supplied.</i> | | |
| 58.VXL1.S6.0000000 | Small container | 10 pieces |
| 58.VXL2.S6.0000000 | Large container with lid | 10 pieces |
| <i>Each pack contains 10 containers colour RAL 7030</i> | | |



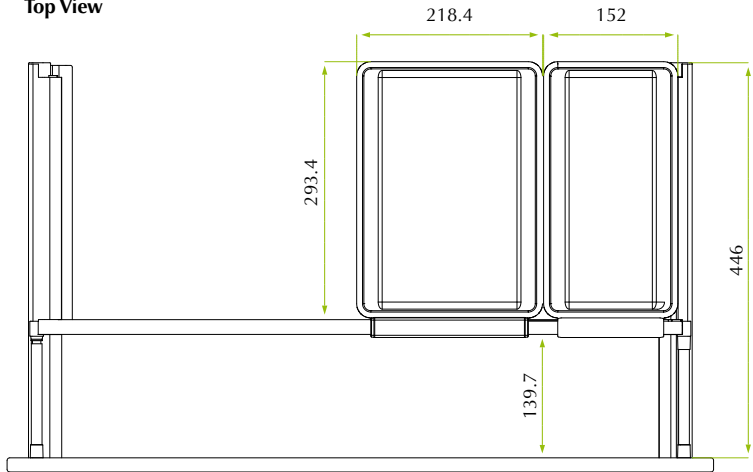
Central siphon application



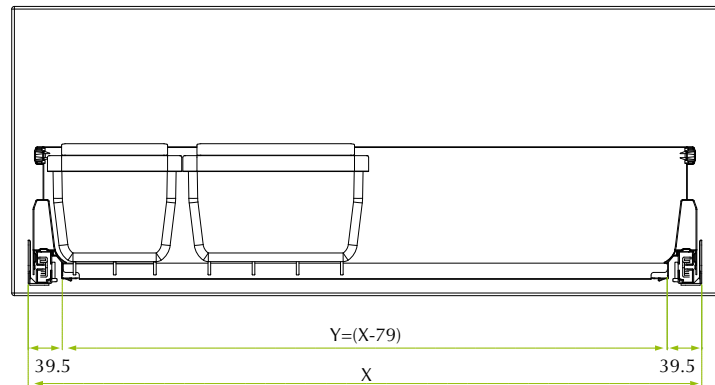
Decentred siphon application



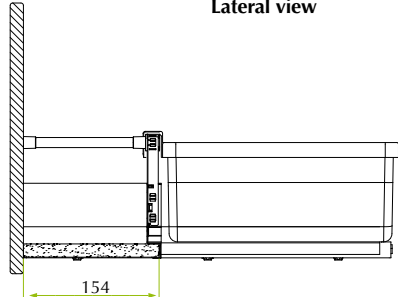
Top view



Back view



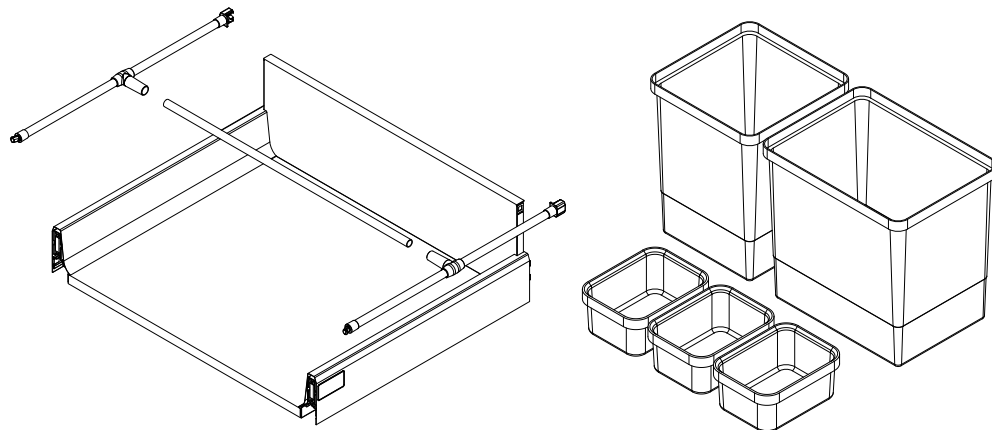
Lateral view



| Drawer | Panel thickness | Y |
|--------|-----------------|-----|
| 600 | 15 | 491 |
| | 16 | 489 |
| | 18 | 485 |
| | 19 | 483 |
| 800 | 15 | 691 |
| | 16 | 689 |
| | 18 | 685 |
| | 19 | 683 |
| 900 | 15 | 791 |
| | 16 | 789 |
| | 18 | 785 |
| | 19 | 783 |
| 1000 | 15 | 891 |
| | 16 | 889 |
| | 18 | 885 |
| | 19 | 883 |
| 1200 | 15 | 991 |
| | 16 | 989 |
| | 18 | 985 |
| | 19 | 983 |



Netto Waste bin solutions



Netto waste bin solution for eco-friendly waste separation and hygienic handling in the kitchen environment

Benefits for the industry

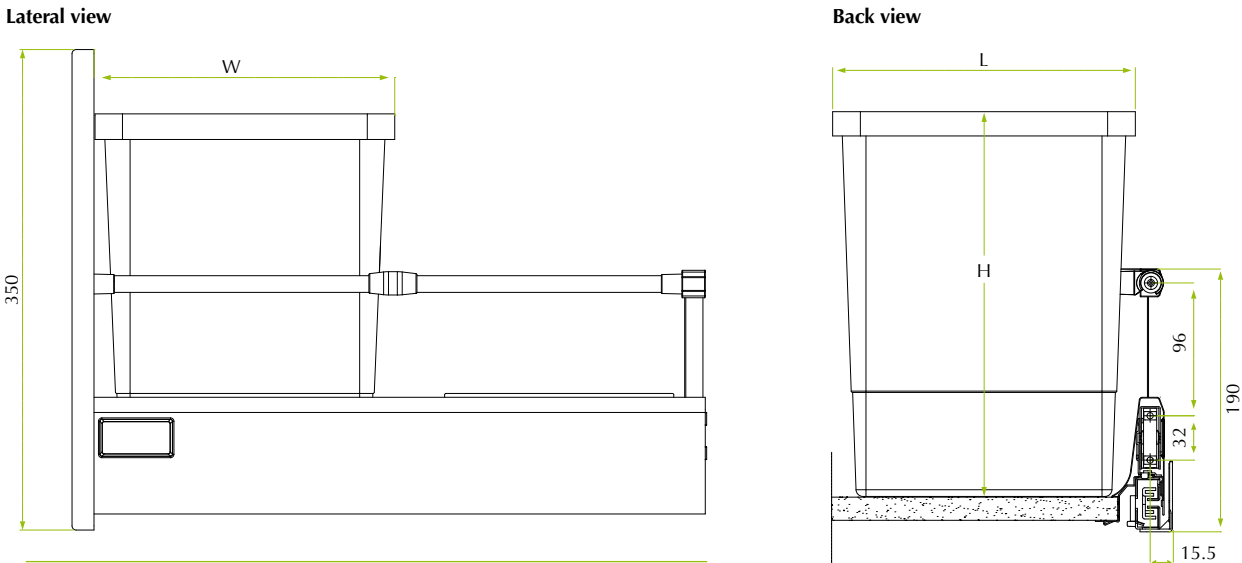
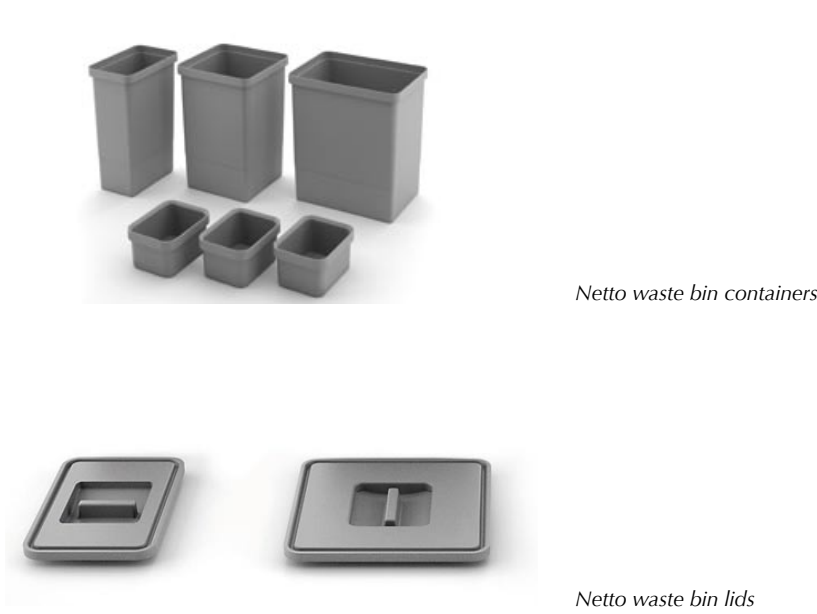
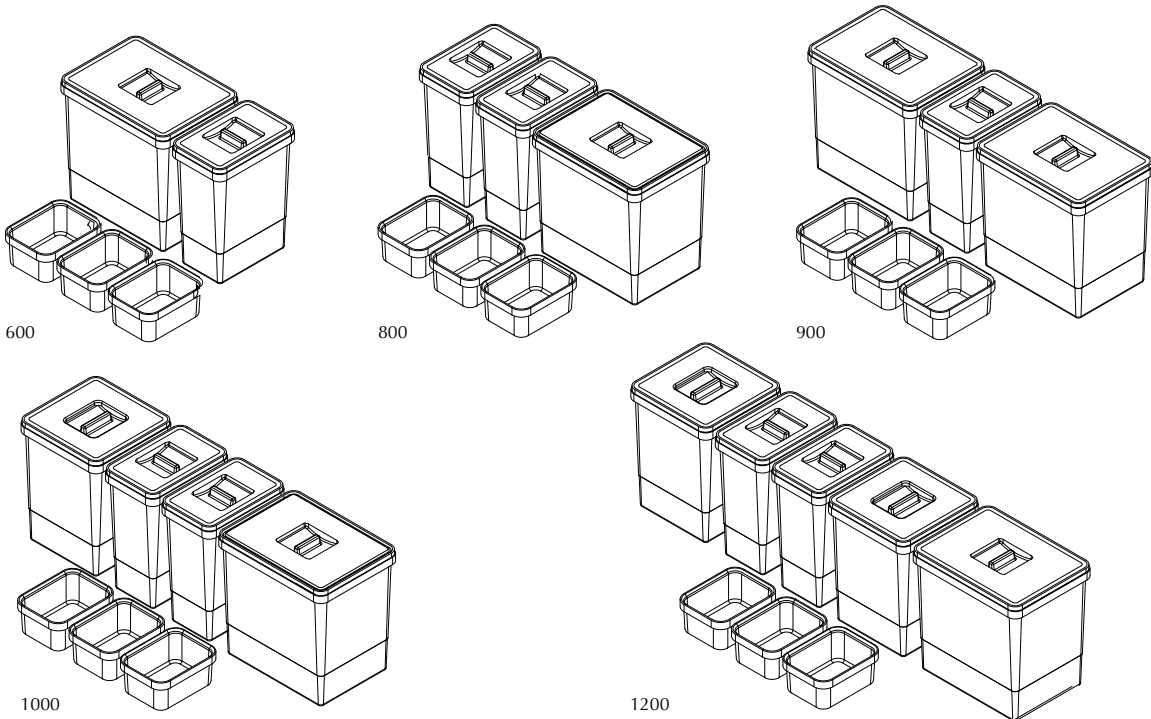
- fits into standard Ten drawers from 600 mm on
- up to 5 different categories waste separable (1000 and 1200 mm drawers)
- perfect combination with Acquario under sink solution for highly functional under sink cabinet
- integral part of drawer equipment or separately tradable accessory for more marketing options

Benefits for the consumer

- two sizes of ABS containers to optimise the back space wherever the siphon is situated (up to a record 85% space usage)
- up to 5 different categories storable (1000 and 1200 mm drawers)
- every high container with lid for increased protection and hygiene
- set of small container in the back for sponges, bags etc
- easily removable containers for facility of cleaning and increased hygiene

| Code | Description | Packing |
|--------------------|--------------------------|---------|
| 58.NX01.S6.0000000 | Netto waste bin kit 600 | 1 kit |
| 58.NX02.S6.0000000 | Netto waste bin kit 800 | 1 kit |
| 58.NX03.S6.0000000 | Netto waste bin kit 900 | 1 kit |
| 58.NX04.S6.0000000 | Netto waste bin kit 1000 | 1 kit |
| 58.NX05.S6.0000000 | Netto waste bin kit 1200 | 1 kit |

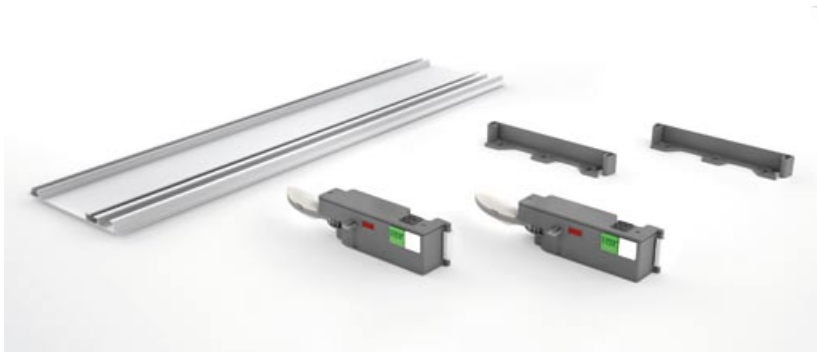
Each pack contains the complete kit for a given drawer size in colour RAL 7030. For transversal railing bars for improved contention, see page 18-19



| Containers | Dimensions | | | |
|------------|------------|-------|-------|-----|
| | Size | L | W | H |
| Small | | 141.8 | 218.4 | 278 |
| Medium | | 218.4 | 218.4 | 278 |
| Large | | 293.4 | 218.4 | 278 |



E-Drive electromagnetic one-touch system



E-drive electromagnetic one-touch system to power single Ten drawers or batteries of drawers at the touch of the front or with sensors

Benefits for the industry

- works as retrofit with all drawer configurations
- exists as complete kit for single bottom drawer or for different standard configurations of drawers in use in kitchen and bathroom
- simple screw-on brackets to clip on the aluminium back rail for ease of installation and ease of servicing
- kits require no wiring and are plug-and-play
- touchless switches allow for 0mm gap on doors for uniformity of front position in the kitchen
- perfect solution for one-drawer only powering (waste bin, pan drawer)
- IP21 protection guarantees hassle free usage
- motors from world leading manufacturer of household appliance motors
- electronics with anti-pinch, self-adaptive power supply and all necessary safety and comfort features for lasting usage without intervention

Benefits for the consumer

- very comfortable assisted opening combined with damped SlowMotion closing
- highly adapted for people with reduced mobility
- nanny children safety activable/disactivable individually on each motor available on request
- power supply with back up battery for network failure available on request

| Code | Description | Packing |
|---------------------|---|---------|
| 59.KED0.00.01.00000 | E-Drive kit for single bottom drawer | 1 kit |
| 59.KED0.00.02.00000 | E-Drive kit for 5 drawers cabinet | 1 kit |
| 59.KED0.00.03.00000 | E-Drive kit for 4 drawers cabinet | 1 kit |
| 59.KED0.00.04.00000 | E-Drive kit for 3 drawers kit | 1 kit |
| 59.KED0.00.05.00000 | E-Drive kit for 2 drawers kit | 1 kit |
| 59.ED.NC.00000000 | Nanny children safety switch (one for each column of drawer to be driven) | 1 kit |
| 59.ED.AC.00000000 | Power supply with back-up battery | 1 kit |

Each pack contains the complete kit for a given drawer configuration for an internal cabinet height of maximum 720 mm, the profile being able to be cut to dimension easily.
For large volumes (100 systems per order) Indicate the internal height and the required spacing of the motors for perfect adaptation to your requirement.
All individual parts and further components of the system available separately. See the complete catalogue and the assembly instructions.

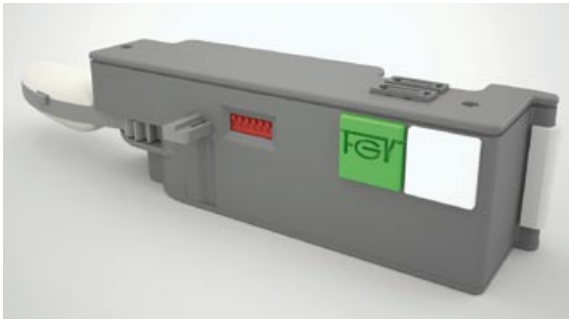


E-Drive kit for single bottom motor

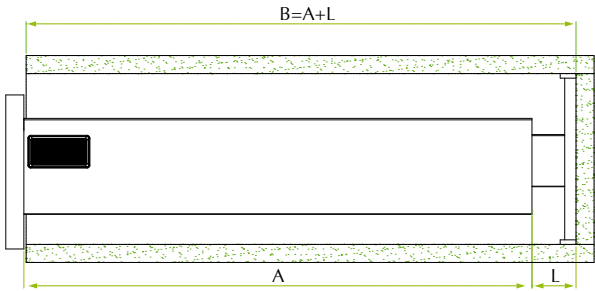
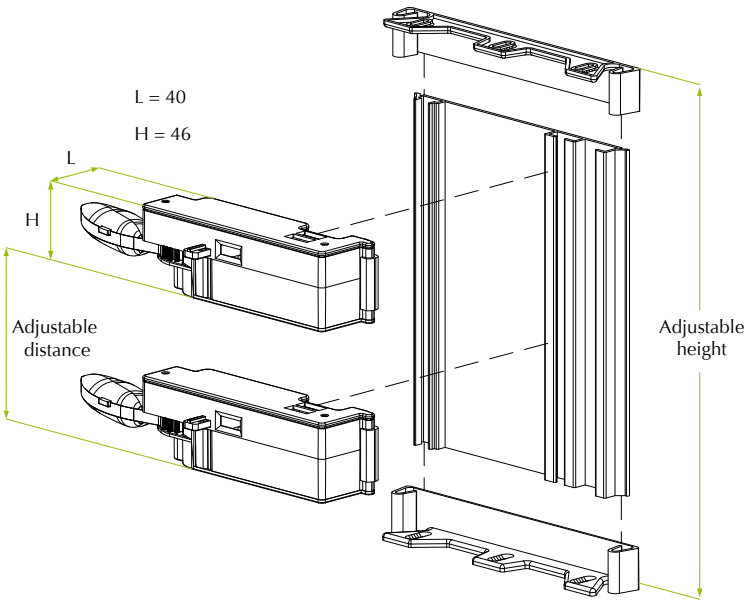
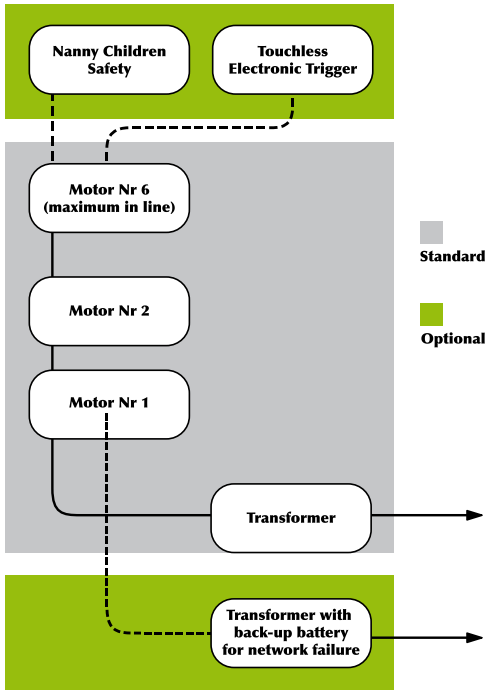


E-Drive kit for maximum 5 drawers in a module

E-drive motor



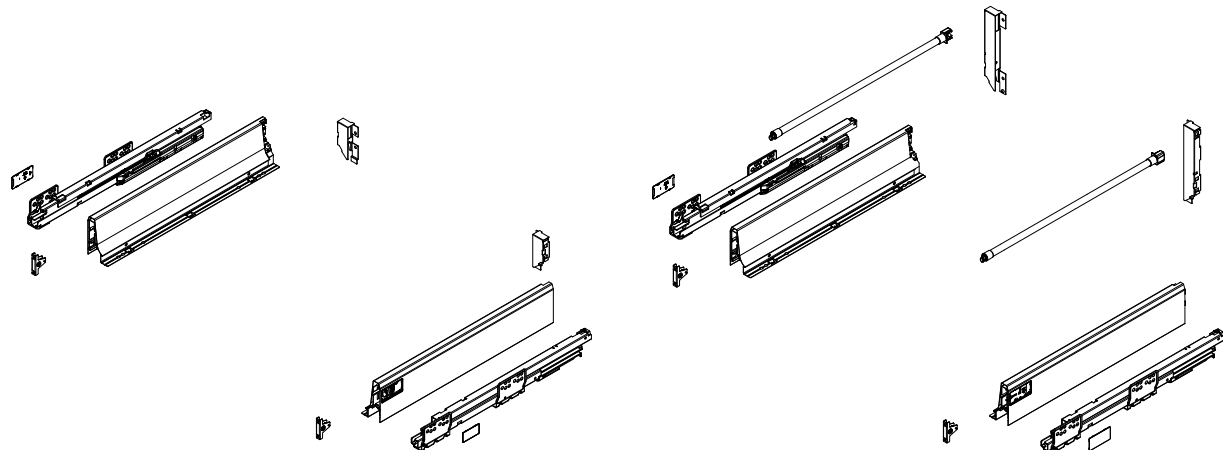
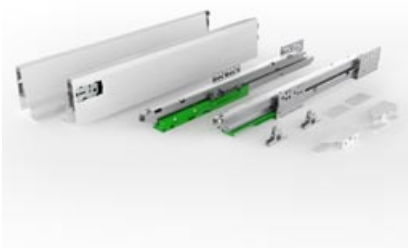
Complete system



| N° of drawers | back panel | L | B=A+L | A |
|---------------|------------|------|-------|-----|
| 1 | steel | 36,5 | ? | 250 |
| from 2 to 5 | steel | 32,5 | ? | 270 |
| 1 | wooden | 52,5 | ? | 350 |
| from 2 to 5 | wooden | 48,5 | ? | 400 |
| | | | | 450 |
| | | | | 500 |
| | | | | 550 |

A= nomination lenght of the drawer
B= internal depth of the cabinet

Ten Standard Kit



Ten standard individual kit for ease of distribution and ease of use

Benefits for the industry

- each kit contains all elements necessary for the realisation of a drawer with exception of the wooden back and bottom
- no handling of individual components necessary
- a few kits cover the necessity of quasi all usual applications
- standard drawer and pan drawer kits available
- easy to sell over the counter

Benefits for the consumer

- all components necessary immediately at hand
- no necessity to stock individual components in large volumes and remain with unpaired components
- ease of transport on site of the packed products and hassle free assembly on site

| Code | Description | Packing |
|---------------------|----------------------------------|---------|
| 58.XEAK.**.25.X0000 | Ten standard drawer kit 250 | 1 kit |
| 58.XEAK.**.27.X0000 | Ten standard drawer kit 270 | 1 kit |
| 58.XEAK.**.35.X0000 | Ten standard drawer kit 350 | 1 kit |
| 58.XEAK.**.40.X0000 | Ten standard drawer kit 400 | 1 kit |
| 58.XEAK.**.45.X0000 | Ten standard drawer kit 450 | 1 kit |
| 58.XEAK.**.50.X0000 | Ten standard drawer kit 500 | 1 kit |
| 58.XEAK.**.55.X0000 | Ten standard drawer kit 550 | 1 kit |
| 58.XEAG.**.25.X0000 | Ten drawer kit with railings 250 | 1 kit |
| 58.XEAG.**.27.X0000 | Ten drawer kit with railings 270 | 1 kit |
| 58.XEAG.**.35.X0000 | Ten drawer kit with railings 350 | 1 kit |
| 58.XEAG.**.40.X0000 | Ten drawer kit with railings 400 | 1 kit |
| 58.XEAG.**.45.X0000 | Ten drawer kit with railings 450 | 1 kit |
| 58.XEAG.**.50.X0000 | Ten drawer kit with railings 500 | 1 kit |
| 58.XEAG.**.55.X0000 | Ten drawer kit with railings 550 | 1 kit |

** colour codes: F1 = Polar White / S6 = Silver Champagne
Each pack has the following content for a given drawer dimension:

- an assembly instruction
- a pair of left and right drawer sides
- a pair of left and right drawer slides
- a pair of cover caps with FGV logo
- a pair of screw-on front fixes
- a pair of 90 mm back fixing brackets for the drawer kit
- alternatively
- a pair of 200 mm high back fixing brackets for the drawer kit with railing
- a pair of screw-on railings (or dowels supplied)

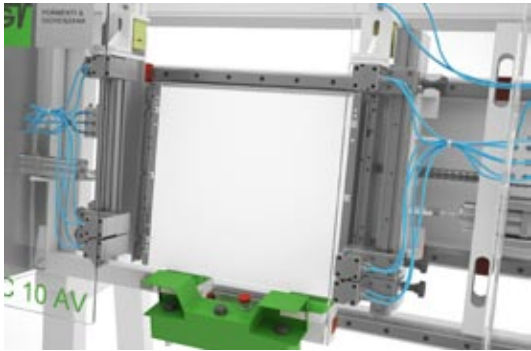
All individual parts and further components of the system available separately. See the complete catalogue and the assembly instructions.

Ten standard kit



Ten standard kit with railing



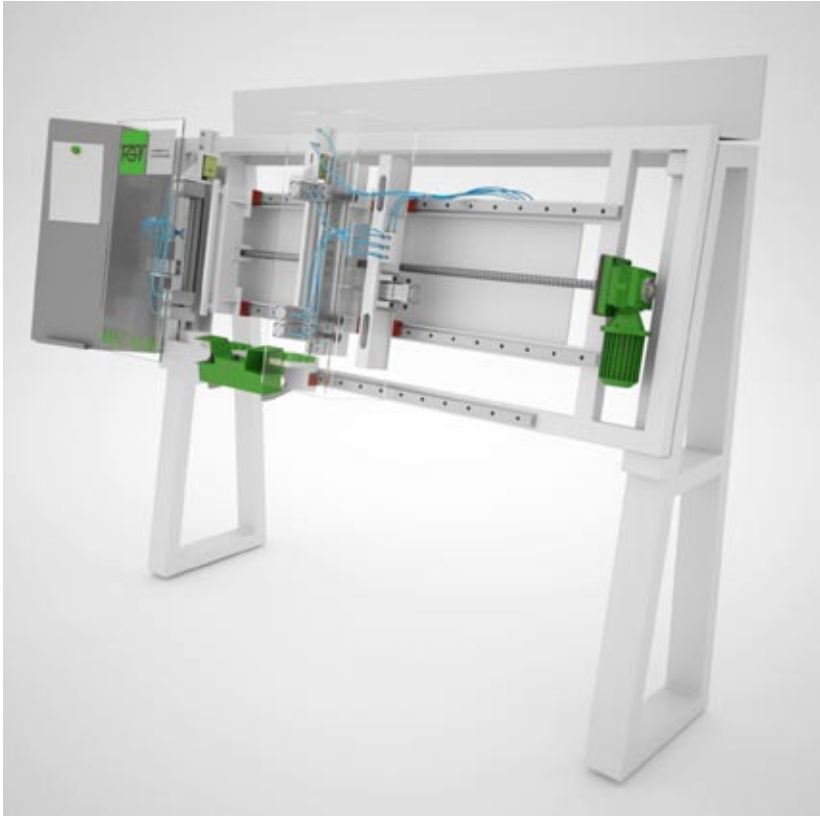


MAC 10 AV fully automatic assembly machine for Ten drawers

- adjustable for 90 and 122 mm drawer
- quick step adjustment from 250 to 550 mm
- quick step adjustment of width from 300 to 1200 mm
- very fast assembly on bottom without groove
- works with metal back and wooden back panel
- economical and safe
- pneumatic operation: the machine assembles sides, back and bottom of the drawer
- to be positioned against the wall or free standing

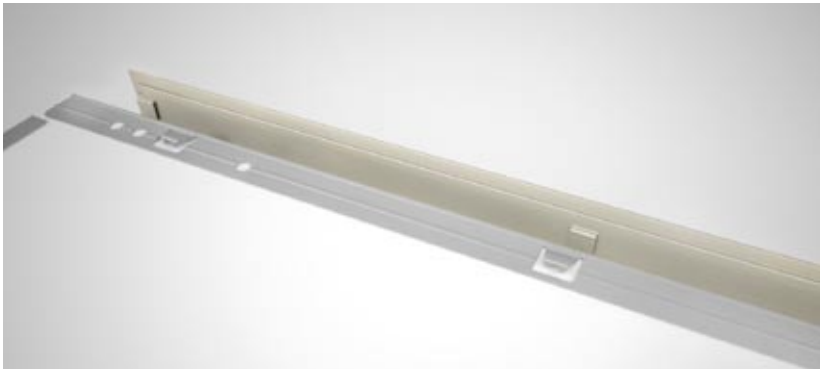
| Code | Description | Packing |
|-------------------|--|---------|
| A9.TMAC.10.A.0000 | Mac 10 AV automatic assembly machine for Ten drawers | 1 piece |

Please request the separate documentation and the instructions of use of this machine

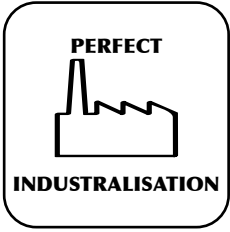
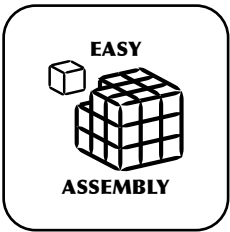


Mac 10 AV automatic assembly machine for Ten drawers

All new tool less fixing with ClawFix technology without the need for grooving or with screw fixing for DIY and small users.



Clawfix



MAC 10 MV manual assembly machine for Ten drawers

- adjustable for 90 and 122 mm drawers
- for lengths from 270 to 550 mm
- adjustment of width from 300 to 1200 mm
- power supply 110V / 200V
- manual operation: the machine keeps the drawer components in position to be fixed by the operator.
- to be positioned on a worktop

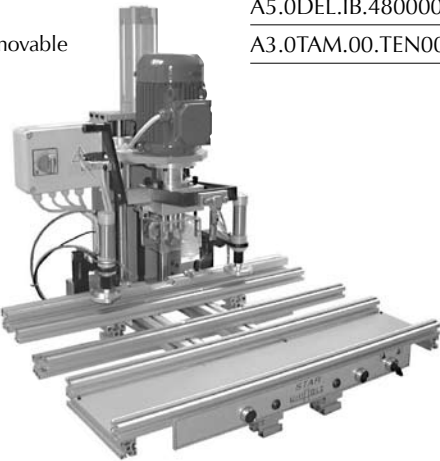
| Code | Description | Packing |
|-------------------|---|---------|
| A9.TMAC.10.M.0000 | Mac 10 AM manual assembly machine for Ten drawers | 1 piece |



Front drilling and insertion machine

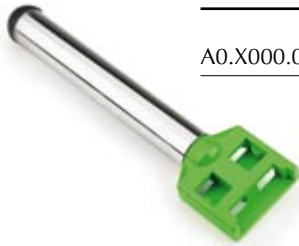
- for front fix with 10 mm pegs equipped with insertion ram
- easy positioning of the front with removable stops left and right
- insertion ram to hold the front fixing
- to be positioned on a worktop

| Code | Description | Packing |
|--------------------|--------------------------------|---------|
| A5.0DEL.IB.4800000 | Drilling and insertion machine | 1 piece |
| A3.0TAM.00.TEN00 | RAM | 1 piece |



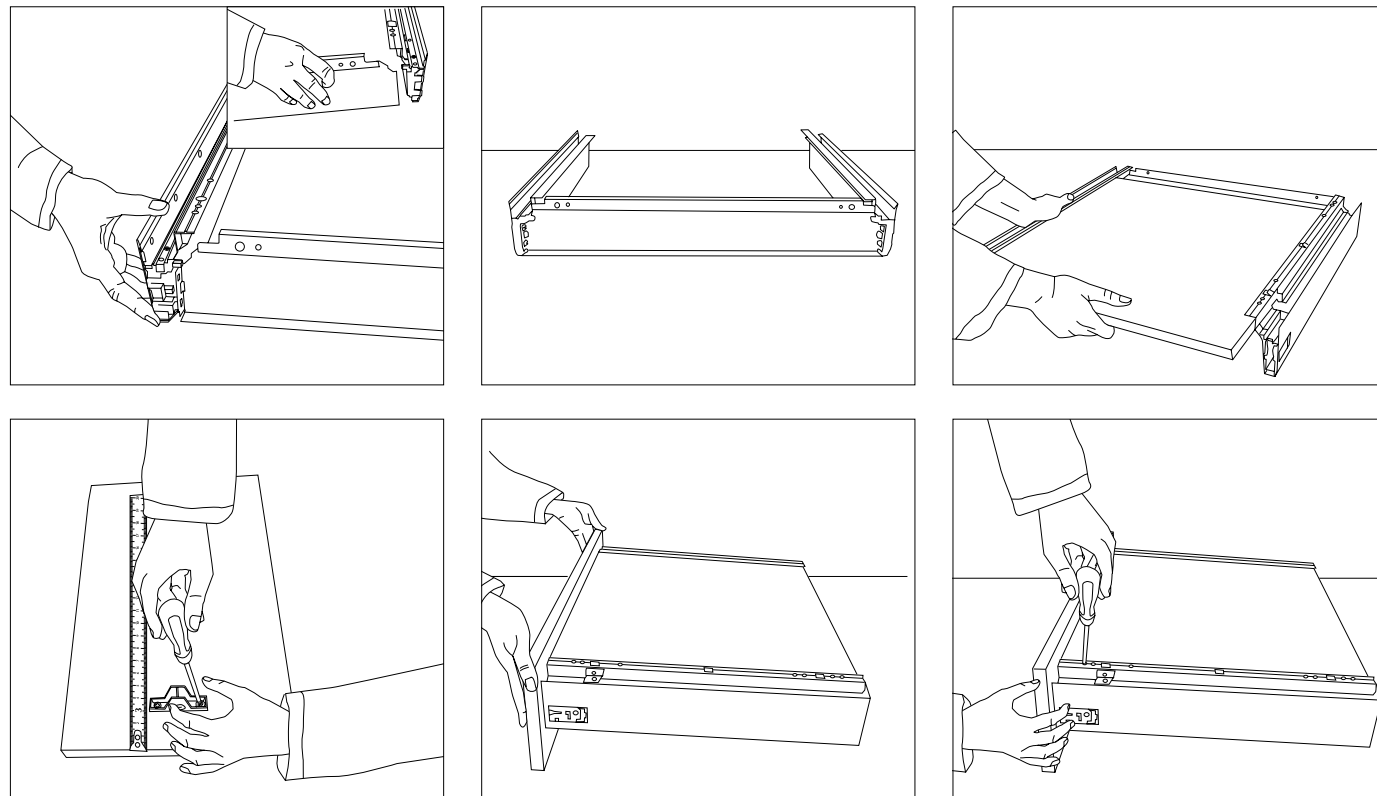
Ten front fixing hammer-in tool

| Code | Description | Packing |
|-------------------|---|-----------|
| A0.X000.00.00.000 | Inserting tool for front brackets with dowel fixing | 25 pieces |

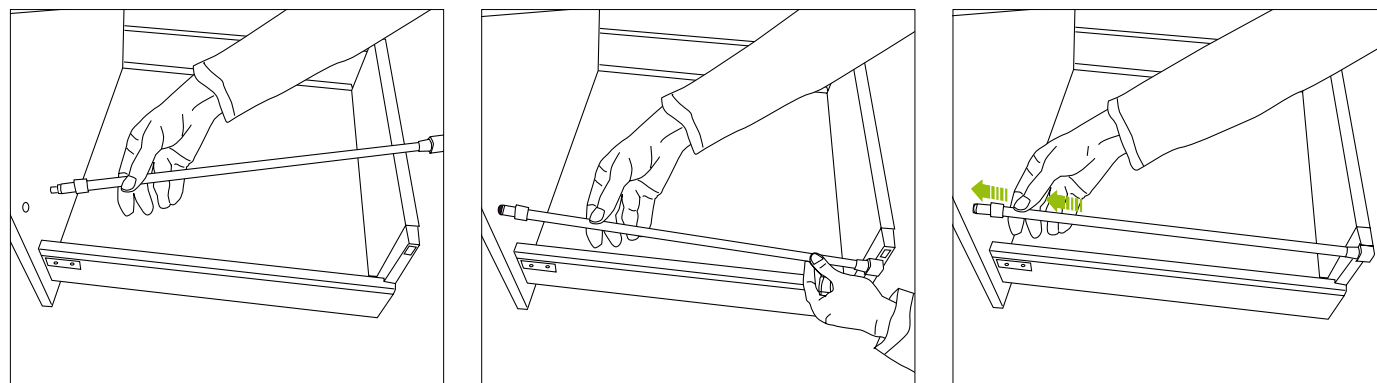




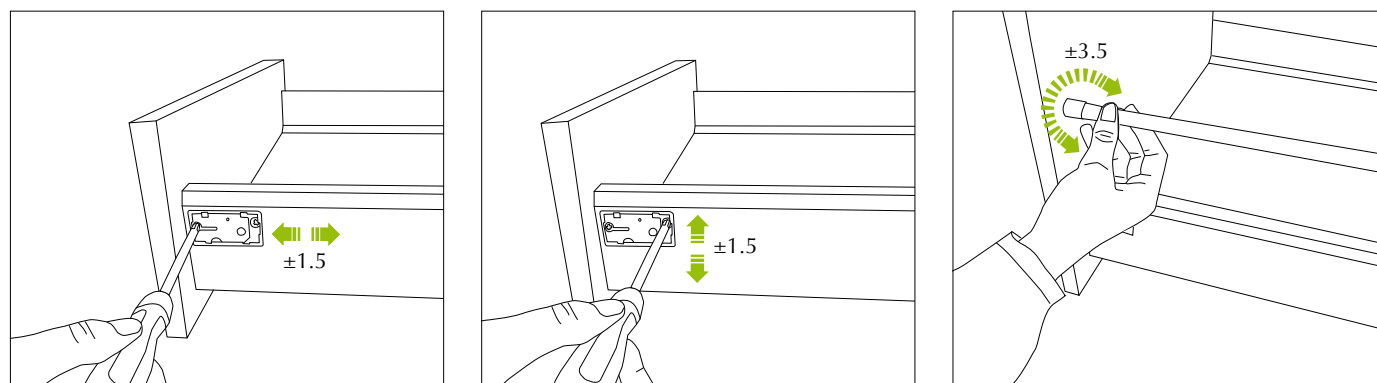
Drawer assembly sequence



Railing assembly sequence

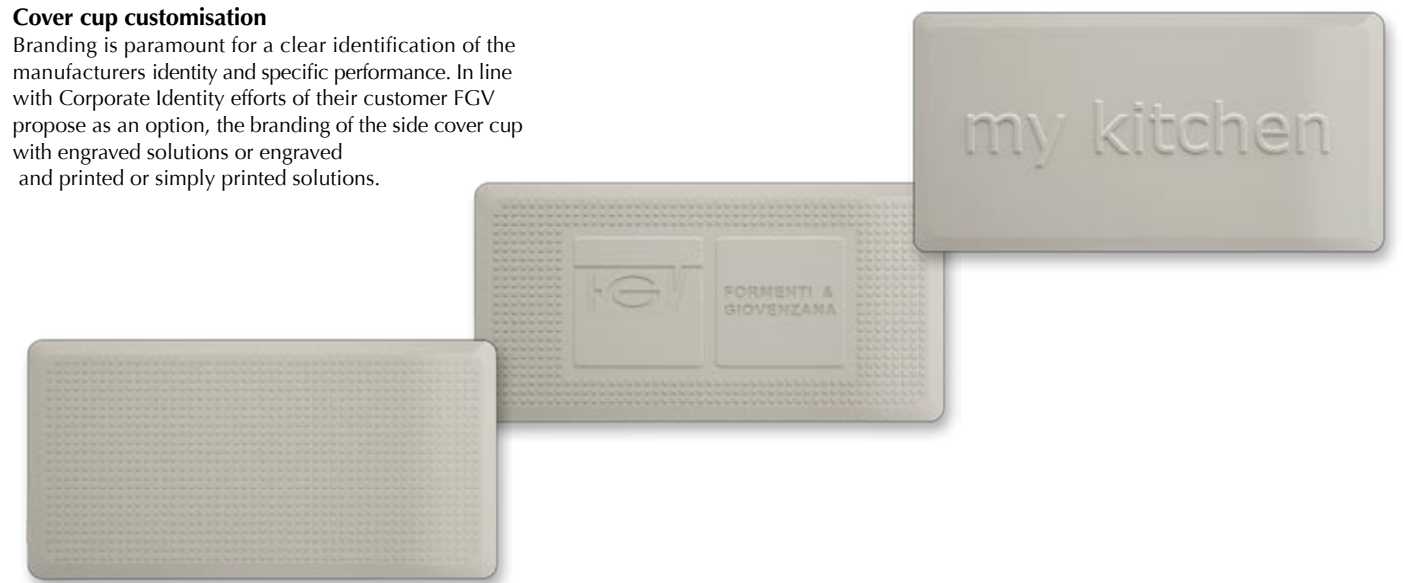


Comfortable and easy front adjustments



Cover cup customisation

Branding is paramount for a clear identification of the manufacturers identity and specific performance. In line with Corporate Identity efforts of their customer FGV propose as an option, the branding of the side cover cup with engraved solutions or engraved and printed or simply printed solutions.



Steel side panel customisation

On special request, each manufacturer can continue its signature work of its kitchen or bathroom furniture by customizing the pattern on the steel side panels, ensuring that the look of their kitchen is recognizable amongst many.



Crystal side panel customisation

Safety glass with special high resistance printing technology permits branding, but can also be used as an excellent marketing tool for adapting the design and the look of the drawer to the general design and materials of the kitchen or bathroom. ArtLine is the optional offering of FGV to customize its Crystal side panels to provide to the end-customer a unique solution.





Alphabetic index

PRODUCT DESCRIPTION

Ten drawer and front attachments

| | | |
|--------------------------------|---------------------|-------|
| Left and right drawer side 250 | 58.X0A0.**.25.00000 | 12-13 |
| Left and right drawer side 270 | 58.X0A0.**.27.00000 | 12-13 |
| Left and right drawer side 350 | 58.X0A0.**.35.00000 | 12-13 |
| Left and right drawer side 400 | 58.X0A0.**.40.00000 | 12-13 |
| Left and right drawer side 450 | 58.X0A0.**.45.00000 | 12-13 |
| Left and right drawer side 500 | 58.X0A0.**.50.00000 | 12-13 |
| Left and right drawer side 550 | 58.X0A0.**.55.00000 | 12-13 |

Ten slides

| | | |
|--------------------------|---------------------|-------|
| Left and right slide 250 | 58.XEF0.07.25.X0000 | 14-15 |
| Left and right slide 270 | 58.XEF0.07.27.X0000 | 14-15 |
| Left and right slide 350 | 58.XEF0.07.35.X0000 | 14-15 |
| Left and right slide 400 | 58.XEF0.07.40.X0000 | 14-15 |
| Left and right slide 450 | 58.XEF0.07.45.X0000 | 14-15 |
| Left and right slide 500 | 58.XEF0.07.50.X0000 | 14-15 |
| Left and right slide 550 | 58.XEF0.07.55.X0000 | 14-15 |

Back panels and back fixings

| | | |
|---|-----------------------|-------|
| Polar White steel back panel H 90 | 58.PXPA.F1.^^.- -.000 | 16-17 |
| Silver Champagne steel back panel H 90 | 58.PXPA.S6.^^.- -.000 | 16-17 |
| Polar White steel back panel H 150 | 58.PXPC.F1.^^.- -.000 | 16-17 |
| Silver Champagne steel back panel H 150 | 58.PXPC.S6.^^.- -.000 | 16-17 |
| Polar White steel back panel H 200 | 58.PXPS.F1.^^.- -.000 | 16-17 |
| Silver Champagne steel back panel H 200 | 58.PXPS.S6.^^.- -.000 | 16-17 |

| | | |
|---|---------------------|-------|
| Set of steel back fixing H 90 | 58.AXPA.**.0000000 | 16-17 |
| Set of steel back fixing H 150 | 58.AXPC.**.0000000 | 16-17 |
| Set of steel back fixing H 150 only for Acquario solution | 58.AXPC.**.L0000000 | 16-17 |
| Set of steel back fixing H 200 | 58.AXPS.**.0000000 | 16-17 |
| Set of steel back fixing top open H 200 | 58.AXPS.**.U0000000 | 16-17 |

Railings, separation tubes and flaps

| | | |
|-------------------------------|---------------------|-------|
| Set of steel railing EasyFix | 58.RX01.**.°°.00000 | 18-19 |
| Set of steel railing screw-on | 58.RX03.**.°°.00000 | 18-19 |
| Steel transversal railing | 58.RXT0.**.^^.00000 | 18-19 |

| | | |
|--------------------------------|--------------------|-------|
| Set of L shaped tube connector | 58.AXL0.**.0000000 | 18-19 |
| Set of T shaped tube connector | 58.AXT0.**.0000000 | 18-19 |

| | | |
|---------------------------|--------------------|-------|
| Steel flap for H 150 back | 58.DXC1.**.0000000 | 18-19 |
| Steel flap for H 200 back | 58.DXS1.**.0000000 | 18-19 |

Crystal and steel side panels

| | | |
|-------------------------------|---------------------|-------|
| Set of steel side panel 450 | 58.SXM0.**.45.00000 | 20-21 |
| Set of steel side panel 500 | 58.SXM0.**.50.00000 | 20-21 |
| Set of crystal side panel 450 | 58.SXV●.**.45.00000 | 20-21 |
| Set of crystal side panel 500 | 58.SXV●.**.50.00000 | 20-21 |

IN internal drawers

| | | |
|--|---------------------|-------|
| Set of front brackets for standard IN drawer | 58.AX40.**.0000000 | 22-23 |
| Set of front brackets for IN drawer with railing | 58.AX4R.**.0000000 | 22-23 |
| Set of railing tubes for IN drawer | 58.RX02.**.°°.00000 | 22-23 |

| | | |
|-------------------------|--------------------|-------|
| Aluminium front profile | 58.PX4A.**.0000000 | 22-23 |
| Crystal front profile | 58.PX4A.●●.0000000 | 22-23 |

Acquario under sink solution

| | | |
|--------------------------|---------------------|-------|
| Acquario drawer kit 450 | 58.XLA1.**.45.00000 | 24-25 |
| Small container | 58.VXL1.S6.0000000 | 24-25 |
| Large container with lid | 58.VXL2.S6.0000000 | 24-25 |

Netto waste bin solutions

| | | |
|--------------------------|--------------------|-------|
| Netto waste bin kit 600 | 58.NX01.S6.0000000 | 26-27 |
| Netto waste bin kit 800 | 58.NX02.S6.0000000 | 26-27 |
| Netto waste bin kit 900 | 58.NX03.S6.0000000 | 26-27 |
| Netto waste bin kit 1000 | 58.NX04.S6.0000000 | 26-27 |
| Netto waste bin kit 1200 | 58.NX05.S6.0000000 | 26-27 |

E-Drive electromagnetic one-touch system

| | | |
|--------------------------------------|---------------------|-------|
| E-Drive kit for single bottom drawer | 59.KED0.00.01.00000 | 28-29 |
| E-Drive kit for 5 drawers cabinet | 59.KED0.00.02.00000 | 28-29 |
| E-Drive kit for 4 drawers cabinet | 59.KED0.00.03.00000 | 28-29 |
| E-Drive kit for 3 drawers kit | 59.KED0.00.04.00000 | 28-29 |
| E-Drive kit for 2 drawers kit | 59.KED0.00.05.00000 | 28-29 |
| Nanny children safety switch | 590.ED.NC.00000000 | 28-29 |
| Power supply with back-up battery | 590.ED.AC.00000000 | 28-29 |

Ten standard kit

| | | |
|-----------------------------|---------------------|-------|
| Ten standard drawer kit 250 | 58.XEAK.**.25.X0000 | 30-31 |
| Ten standard drawer kit 270 | 58.XEAK.**.27.X0000 | 30-31 |
| Ten standard drawer kit 350 | 58.XEAK.**.35.X0000 | 30-31 |
| Ten standard drawer kit 400 | 58.XEAK.**.40.X0000 | 30-31 |
| Ten standard drawer kit 450 | 58.XEAK.**.45.X0000 | 30-31 |
| Ten standard drawer kit 500 | 58.XEAK.**.50.X0000 | 30-31 |
| Ten standard drawer kit 550 | 58.XEAK.**.55.X0000 | 30-31 |

| | | |
|----------------------------------|---------------------|-------|
| Ten drawer kit with railings 250 | 58.XEAG.**.25.X0000 | 30-31 |
| Ten drawer kit with railings 270 | 58.XEAG.**.27.X0000 | 30-31 |
| Ten drawer kit with railings 350 | 58.XEAG.**.35.X0000 | 30-31 |
| Ten drawer kit with railings 400 | 58.XEAG.**.40.X0000 | 30-31 |
| Ten drawer kit with railings 450 | 58.XEAG.**.45.X0000 | 30-31 |
| Ten drawer kit with railings 500 | 58.XEAG.**.50.X0000 | 30-31 |
| Ten drawer kit with railings 550 | 58.XEAG.**.55.X0000 | 30-31 |

MAC 10 AV and tools

| | | |
|--|--------------------|-------|
| Mac 10 AV automatic assembly machine for Ten drawers | A9.TMAC.10.A.0000 | 32-33 |
| Mac 10 AM manual assembly machine for Ten drawers | A9.TMAC.10.M.0000 | 32-33 |
| Drilling and insertion machine | A5.0DEL.IB.4800000 | 32-33 |
| RAM for drilling and insertion machine | A3.0TAM.00.TEN00 | 32-33 |
| Inserting tool for front brackets with dowel fixing | A0.X000.00.00.000 | 32-33 |



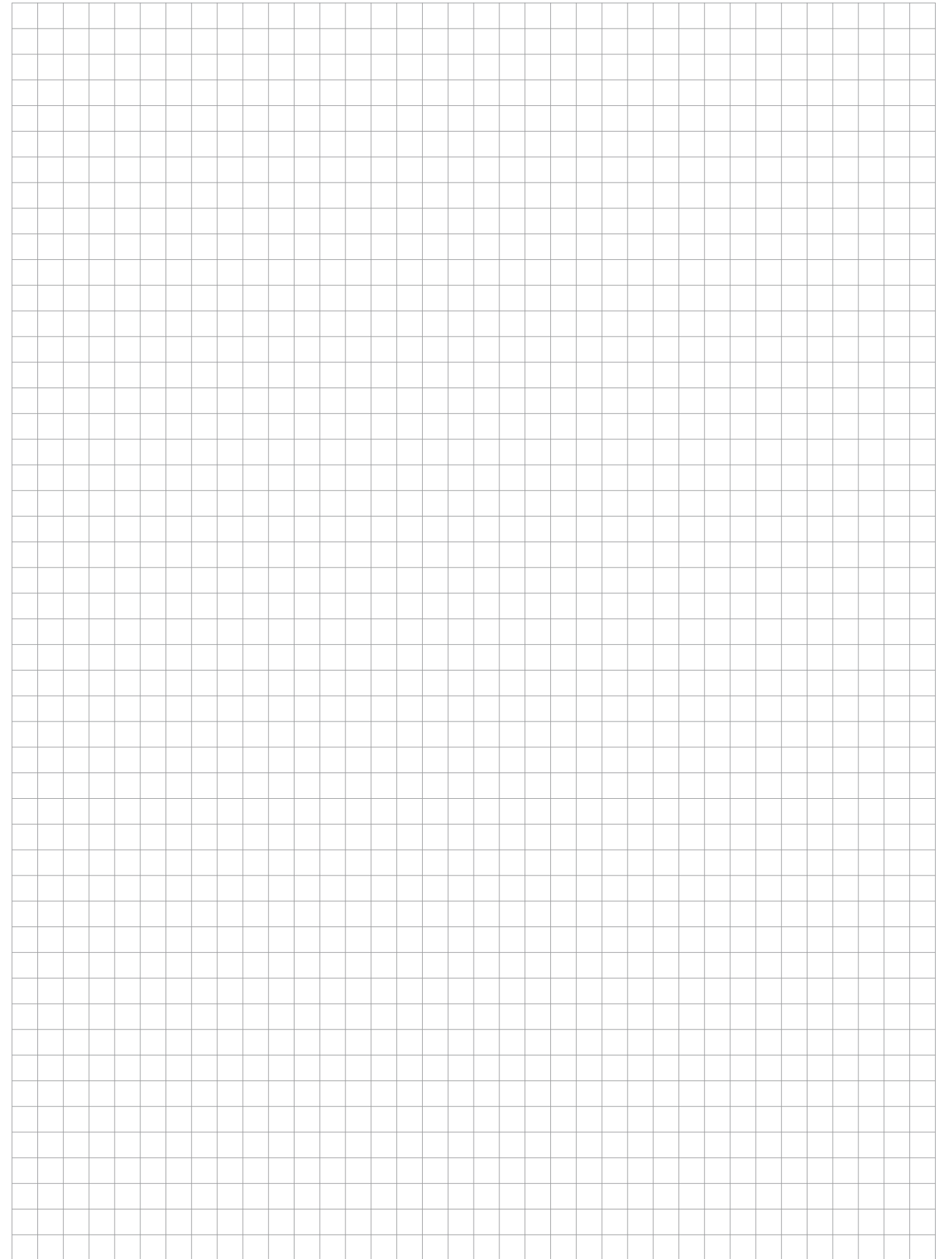
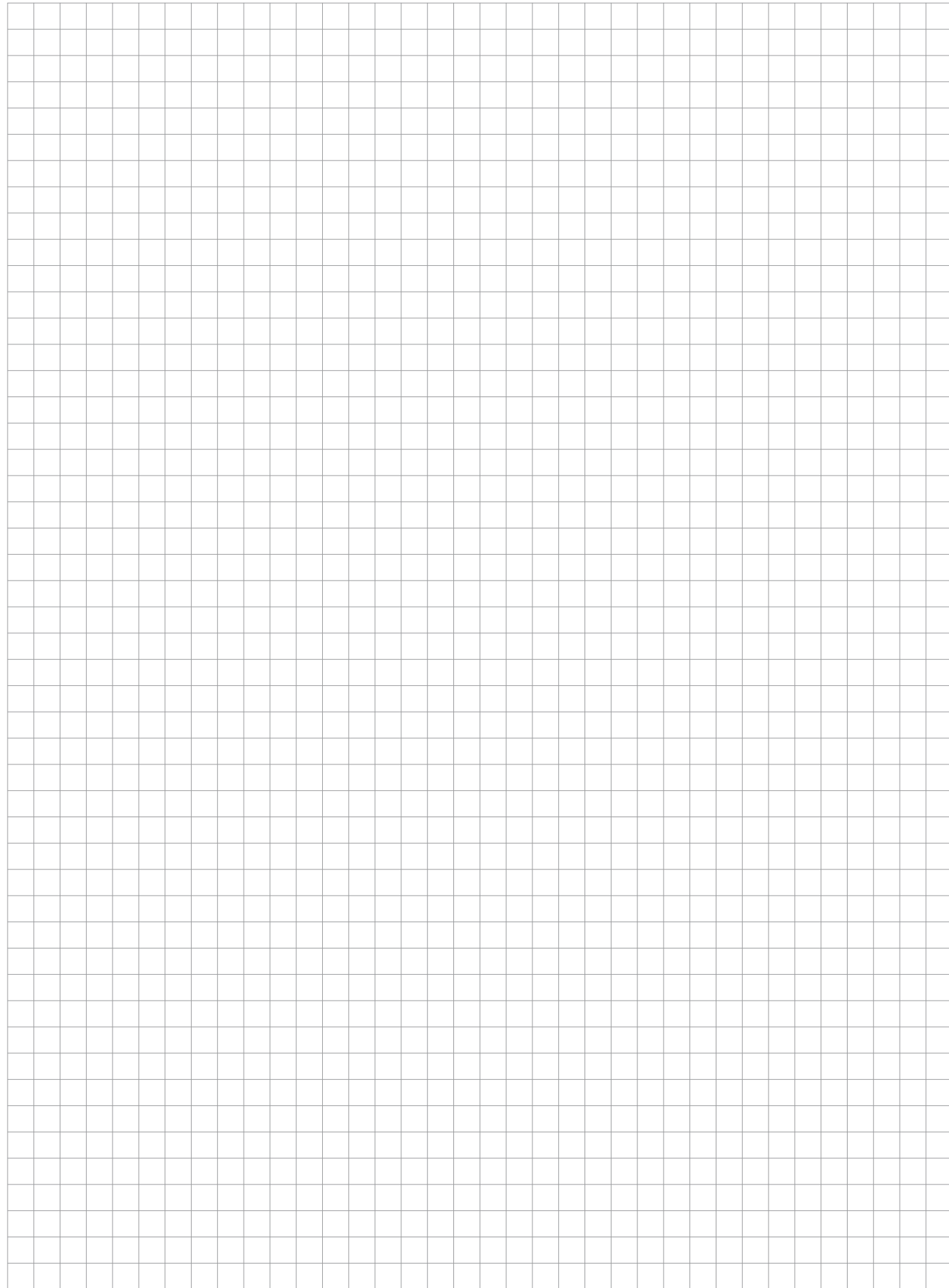
Numeric index

CODE

| |
|-----------------------|
| 58.AX40.**.0000000 |
| 58.AX4R.**.0000000 |
| 58.AXL0.**.0000000 |
| 58.AXPA.**.0000000 |
| 58.AXPC.**.0000000 |
| 58.AXPC.**.L0000000 |
| 58.AXPS.**.0000000 |
| 58.AXPS.**.U0000000 |
| 58.AXT0.**.0000000 |
| 58.DXC1.**.0000000 |
| 58.DXS1.**.0000000 |
| 58.NX01.S6.0000000 |
| 58.NX02.S6.0000000 |
| 58.NX03.S6.0000000 |
| 58.NX04.S6.0000000 |
| 58.NX05.S6.0000000 |
| 58.PX4A.**.0000000 |
| 58.PX4A.●●.0000000 |
| 58.PXPA.F1.^^.- -.000 |
| 58.PXPA.S6.^^.- -.000 |
| 58.PXPC.F1.^^.- -.000 |
| 58.PXPC.S6.^^.- -.000 |
| 58.PXPC.S6.^^.- -.000 |
| 58.PXPS.F1.^^.- -.000 |
| 58.PXPS.S6.^^.- -.000 |
| 58.PXPS.F1.^^.- -.000 |
| 58.PXPS.S6.^^.- -.000 |
| 58.RX01.**.°°.00000 |
| 58.RX02.**.°°.00000 |
| 58.RX03.**.°°.00000 |
| 58.RXT0.**.^^.00000 |
| 58.SXM0.**.45.00000 |
| 58.SXM0.**.50.00000 |
| 58.SXV●.**.45.00000 |
| 58.SXV●.**.50.00000 |
| 58.VXL1.S6.0000000 |
| 58.VXL2.S6.0000000 |
| 58.X0A0.**.25.00000 |
| 58.X0A0.**.27.00000 |
| 58.X0A0.**.35.00000 |
| 58.X0A0.**.40.00000 |
| 58.X0A0.**.45.00000 |
| 58.X0A0.**.50.00000 |
| 58.X0A0.**.55.00000 |
| 58.XEAG.**.25.X0000 |
| 58.XEAG.**.27.X0000 |
| 58.XEAG.**.35.X0000 |
| 58.XEAG.**.40.X0000 |
| 58.XEAG.**.45.X0000 |
| 58.XEAG.**.50.X0000 |
| 58.XEAG.**.55.X0000 |
| 58.XEAK.**.25.X0000 |
| 58.XEAK.**.27.X0000 |
| 58.XEAK.**.35.X0000 |
| 58.XEAK.**.40.X0000 |
| 58.XEAK.**.45.X0000 |
| 58.XEAK.**.50.X0000 |
| 58.XEAK.**.55.X0000 |
| 58.XEF0.07.25.X0000 |
| 58.XEF0.07.27.X0000 |
| 58.XEF0.07.35.X0000 |
| 58.XEF0.07.40.X0000 |
| 58.XEF0.07.45.X0000 |
| 58.XEF0.07.50.X0000 |
| 58.XEF0.07.55.X0000 |
| 58.XLA1.**.45.00000 |
| 59.KED0.00.01.00000 |
| 59.KED0.00.02.00000 |
| 59.KED0.00.03.00000 |
| 59.KED0.00.04.00000 |
| 59.KED0.00.05.00000 |
| 590.ED.NC.00000000 |
| 590.ED.AC.00000000 |
| 590.ED.NC.00000000 |
| A0.X000.00.00.000 |
| A3.0TAM.00.TEN00 |
| A5.0DEL.IB.4800000 |
| A9.TMAC.10.A.0000 |
| A9.TMAC.10.M.0000 |

PRODUCT DESCRIPTION

| | |
|---|-------|
| Set of front brackets for standard IN drawer | 22-23 |
| Set of front brackets for IN drawer with railing | 22-23 |
| Set of L shaped tube connector | 18-19 |
| Set of steel back fixing H 90 | 16-17 |
| Set of steel back fixing H 150 | 16-17 |
| Set of steel back fixing H 150 only for Acquario solution | 16-17 |
| Set of steel back fixing H 200 | 16-17 |
| Set of steel back fixing top open H 200 | 16-17 |
| Set of T shaped tube connector | 18-19 |
| Steel flap for H 150 back | 18-19 |
| Steel flap for H 200 back | 18-19 |
| Netto waste bin kit 600 | 26-27 |
| Netto waste bin kit 800 | 26-27 |
| Netto waste bin kit 900 | 26-27 |
| Netto waste bin kit 1000 | 26-27 |
| Netto waste bin kit 1200 | 26-27 |
| Aluminium front profile | 22-23 |
| Crystal front profile | 22-23 |
| Polar White steel back panel H 90 | 16-17 |
| Silver Champagne steel back panel H 90 | 16-17 |
| Polar White steel back panel H 150 | 16-17 |
| Silver Champagne steel back panel H 150 | 16-17 |
| Polar White steel back panel H 200 | 16-17 |
| Silver Champagne steel back panel H 200 | 16-17 |
| Set of steel railing EasyFix | 18-19 |
| Set of railing tubes for IN drawer | 22-23 |
| Set of steel railing screw-on | 18-19 |
| Steel transversal railing | 18-19 |
| Set of steel side panel 450 | 20-21 |
| Set of steel side panel 500 | 20-21 |
| Set of crystal side panel 450 | 20-21 |
| Set of crystal side panel 500 | 20-21 |
| Small container | 24-25 |
| Large container with lid | 24-25 |
| Left and right drawer side 250 | 12-13 |
| Left and right drawer side 270 | 12-13 |
| Left and right drawer side 350 | 12-13 |
| Left and right drawer side 400 | 12-13 |
| Left and right drawer side 450 | 12-13 |
| Left and right drawer side 500 | 12-13 |
| Left and right drawer side 550 | 12-13 |
| Ten drawer kit with railings 250 | 30-31 |
| Ten drawer kit with railings 270 | 30-31 |
| Ten drawer kit with railings 350 | 30-31 |
| Ten drawer kit with railings 400 | 30-31 |
| Ten drawer kit with railings 450 | 30-31 |
| Ten drawer kit with railings 500 | 30-31 |
| Ten drawer kit with railings 550 | 30-31 |
| Ten standard drawer kit 250 | 30-31 |
| Ten standard drawer kit 270 | 30-31 |
| Ten standard drawer kit 350 | 30-31 |
| Ten standard drawer kit 400 | 30-31 |
| Ten standard drawer kit 450 | 30-31 |
| Ten standard drawer kit 500 | 30-31 |
| Ten standard drawer kit 550 | 30-31 |
| Left and right slide 250 | 14-15 |
| Left and right slide 270 | 14-15 |
| Left and right slide 350 | 14-15 |
| Left and right slide 400 | 14-15 |
| Left and right slide 450 | 14-15 |
| Left and right slide 500 | 14-15 |
| Left and right slide 550 | 14-15 |
| Acquario drawer kit 450 | 24-25 |
| E-Drive kit for single bottom drawer | 28-29 |
| E-Drive kit for 5 drawers cabinet | 28-29 |
| E-Drive kit for 4 drawers cabinet | 28-29 |
| E-Drive kit for 3 drawers kit | 28-29 |
| E-Drive kit for 2 drawers kit | 28-29 |
| Nanny children safety switch | 28-29 |
| Power supply with back-up battery | 28-29 |
| Inserting tool for front brackets with dowel fixing | 32-33 |
| RAM for drilling and insertion machine | 32-33 |
| Drilling and insertion machine | 32-33 |
| Mac 10 AV automatic assembly machine for Ten drawers | 32-33 |
| Mac 10 AM manual assembly machine for Ten drawers | 32-33 |



**FORMENTI & GIOVENZANA S.p.A.**

Via Concordia, 16
20050 Veduggio con Colzano (MI) - ITALY
Tel. +39 0362 947.1 r.a. - Fax +39 0362 998788
info@fgv.it
www.fgv.it

FGV SLOVAKIA, Spol s r.o.

Partizánska cesta 73, P.O.BOX 87
957 01 Bánovce nad Bebravou - SLOVAKIA
Tel. +421 (0) 38 7626 100 - Fax +421 (0) 38 7626 105
info@fgv.sk

FGVTN BRASIL LTDA.

Rua Francisco Derosso, 1352
Curitiba Paraná 81710 000 - BRASIL
Tel. +55 41 2107 4411 - Fax +55 41 3275 3038
fgvtn@fgvtnbrasil.com.br - www.fgvtnbrasil.com.br

FGV ASIA Limited

2503A-2505, 113 Argyle Street
Kowloon, Hong Kong - P R CHINA
Tel.+852 2648 7419 - Fax +852 2648 7389
info@fgvasia.com - www.fgvasia.com

FGV (Guangzhou) Company Limited

Units 2710-2711, Yang Cheng International Trading Centre
East Tower, Ti Yu Dong Lu, No. 122
Guangzhou - P R CHINA
Tel. +86 20 38870570 - Fax +86 20 38870323
info@fgvchina.com - www.fgvchina.com

DEUTSCHE FGV Formenti & Giovenzana Möbelbeschläge GmbH

Industriestr. 44
D-33397 Rietberg - GERMANY
Tel. +49 (0) 5244-9708-0 - Fax +49 (0) 5244-9708-15
www.fgvgermany.com

FORMENTI & GIOVENZANA POLSKA Sp. z o.o.

Ul. Boleslawiecka 8a
98-400 Wieruszów - POLAND
Tel. +48 62 58 10 400 - Fax +48 62 58 10 480
www.fgvpolska.pl

FGV LIFESTYLES INDIA Pvt. Ltd.

B 104 Abhinav Apartments Shradhanand Road
Vile Parle (East) Mumbai 400057 - INDIA
Tel. +91 2226180007 / 26101534
Fax +91 2226180006
fgvlifestyles@vsnl.net

FORMENTI & GIOVENZANA IBERICA, S.L.

Santiago Rusiñol 27, local 6
08031 Barcelona - SPAIN
Tel. +34 93 357 48 38 - Fax. +34 92 429 89 05
mauricidepedro@fgviberica.e.telefonica.net

FGV SERVICE VENETO S.r.l.

Via dell'Artigianato, 13/A
31047 Ponte di Piave (TV) - ITALY
Tel. +39 0422 858033 - Fax +39 0422 857316
infoveneto@fgvservice.com

FGV SERVICE CENTRO-SUD

Via Massimo d'Antona
60033 Chiaravalle (AN) - ITALY
Tel. +39 071 7451125 - Fax +39 071 7496441
infocentrosud@fgvservice.com

CRESTWOOD FITTINGS Ltd.

Crestwood House
St. Martin's Stamford
Lincolnshire PE9 2LG - U.K.
Tel. +44 (0) 1780-753407 - Fax +44 (0) 1780-752344
www.crestwood.co.uk

CONTEC - INTERNATIONAL

131, rue de Paris
F - 94220 Charenton-Le-Pont - FRANCE
Tel. +33 (0) 1 56 29 15 15 - Fax +33 (0) 1 56 29 15 16
www.contec-international.com